



2014

Annual Meeting Survey Results



The Society for the Study of Social Problems
64th Annual Meeting, August 15-17, 2014
The San Francisco Marriot Marquis
780 Mission Street

SSSP 2014 Annual Meeting Survey Results Released

September 18, 2014

With **821 registrants** surveyed and **243 total responses**, we're happy to release the results of the 2014 Annual Meeting Survey on behalf of the SSSP Administrative Office. Thank you for taking time out to participate in our survey. Your responses are vital in helping SSSP to provide a valuable conference experience and to continue our mission as a social justice organization.

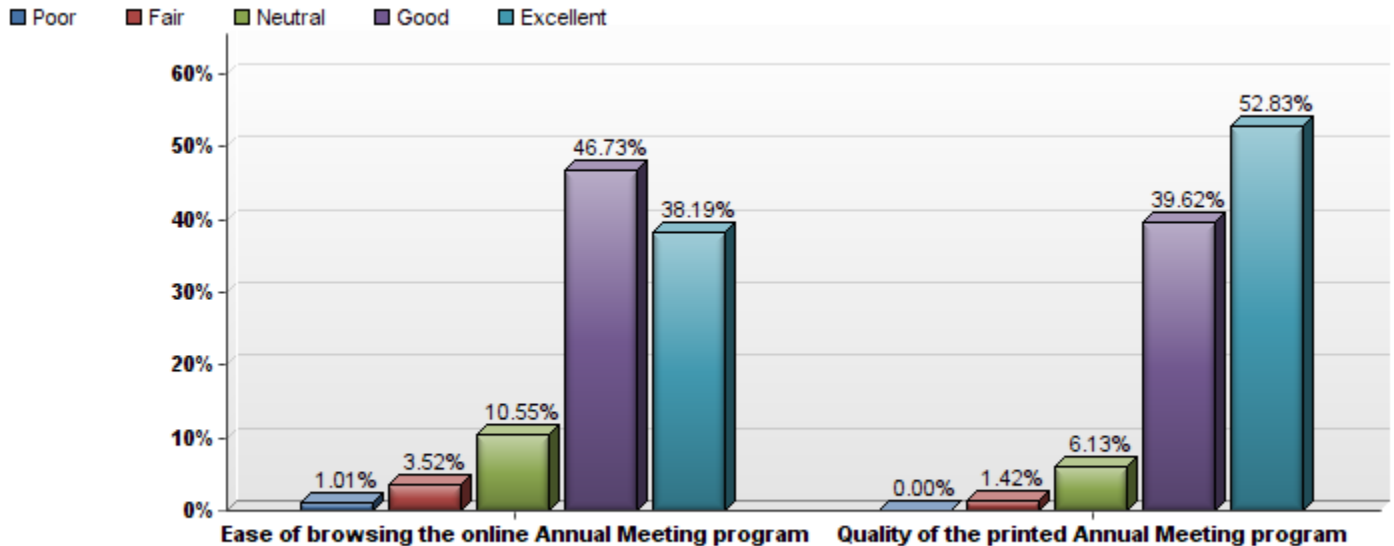
The survey ran for two weeks from August 28 through September 12 with a **30% participation rate** which is up 4% from the 2013 Annual Meeting survey. Registrants took an average of 4 minutes to complete the survey.

In this report, you'll see the survey questions, possible answers, summary of responses, graphs, and comments where applicable. The comments have not been edited and may contain misspellings and grammatical errors.

In the next month, the Administrative Office will be distributing a survey to all current members to gauge satisfaction of the current operations of the Society and to influence future directives for the Society. Your participation is essential to examine what is working within the Society and what can be improved. Be on the lookout for the survey this fall – we look forward to your participation!

1. Based on your experience, please rate the following items.

#	Question	Poor (1)	Fair (2)	Neutral (3)	Good (4)	Excellent (5)	Total Responses	Mean
1	Ease of browsing the online Annual Meeting program	2	7	21	93	76	199	4.18
2	Quality of the printed Annual Meeting program	0	3	13	84	112	212	4.44



2. You said that you are dissatisfied with the printed Annual Meeting Program. Please tell us why you are dissatisfied.

Optional follow-up text response from respondents who selected "Fair" or "Poor"

All the other associations I belong to offer a more dynamic interactive environment that facilitates a search through the document for terms, people's names, dates and times. So, it is a bit "klunky" to have to move through a pdf document page by page, without a search engine.

It is necessary to have a synopsis of sessions or at least a brief abstract.

Statistic	Value
Total Responses	2

3. You said that you are dissatisfied with the online Annual Meeting Program. Please tell us why you are dissatisfied.

Optional follow-up text response from respondents who selected "Fair" or "Poor"

The online format could be made more accessible to mobile devices.

It was just difficult to look up different sessions. I had a hard time finding certain sessions, and also had a hard time even finding where to go to look up sessions.

Seems dated compared to other online conference programs. The ASA app is far from perfect but it was engaging. not enough sortability...

very confusing.

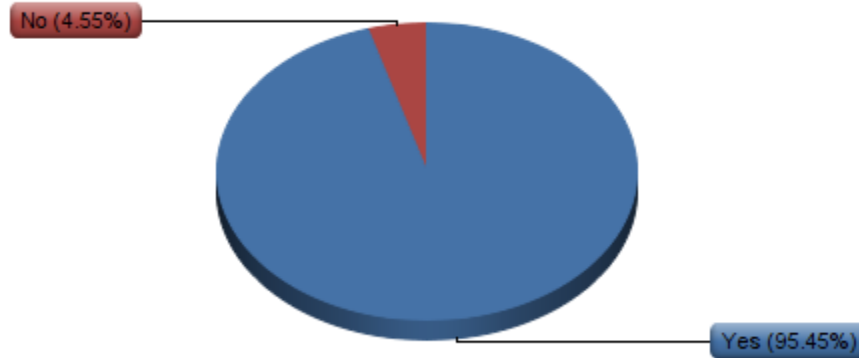
It can be difficult to find the days/times of a particular session. The header doesn't always apply to all sessions on that page.

Please make it searchable by divisions and individuals

Statistic	Value
Total Responses	7

4. Did you pre-register for the Annual Meeting?

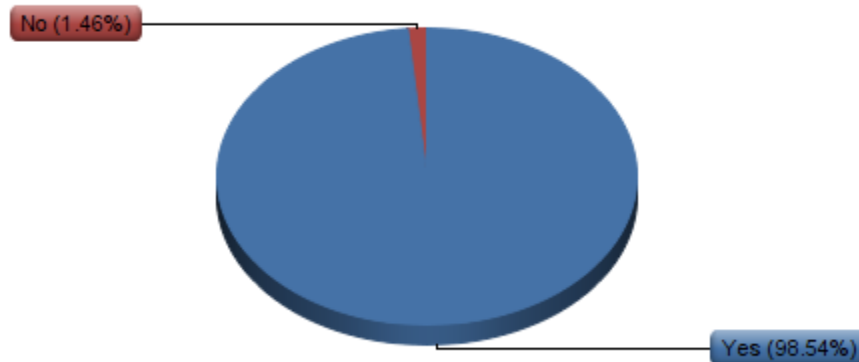
#	Answer	Response	%
1	Yes	210	95%
2	No	10	5%
	Total	220	100%



5. Was the online pre-registration process satisfactory?

This question was asked only to online registrants.

#	Answer	Response	%
1	Yes	203	99%
2	No	3	1%
	Total	206	100%



6. You said that you are dissatisfied with the online pre-registration process. Please tell us why you are dissatisfied.

Optional follow-up text response from respondents who selected "Fair" or "Poor"

Once completed, I found it difficult to find confirmation on the website, as I had misplace the email. It would be nice if somewhere on your user profile for the SSSP website, it showed if you were registered for the conference.

It would be helpful to have the system provide an email receipt after registration. Otherwise, the online system was just fine.

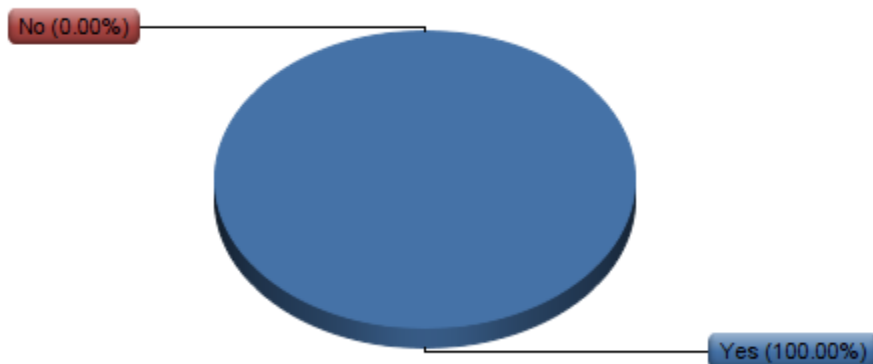
To much problems, very complicate.

Statistic	Value
Total Responses	3

7. Was the on-site registration process satisfactory?

This question was asked only to on-site registrants.

#	Answer	Response	%
1	Yes	10	100%
2	No	0	0%
	Total	10	100%



8. You said that you are dissatisfied with the on-site registration process. Please tell us why you are dissatisfied.

Optional follow-up text response from respondents who selected "Fair" or "Poor"

Statistic	Value
Total Responses	0

9. Please check the day(s) you attended the Annual Meeting.

#	Answer	Response	%
1	Thursday, August 14	69	32%
2	Friday, August 15	176	82%
3	Saturday, August 16	187	87%
4	Sunday, August 17	142	66%
Statistic		Value	
Total Responses		215	

10. Did you participate in the Annual Meeting as any of the roles listed below?

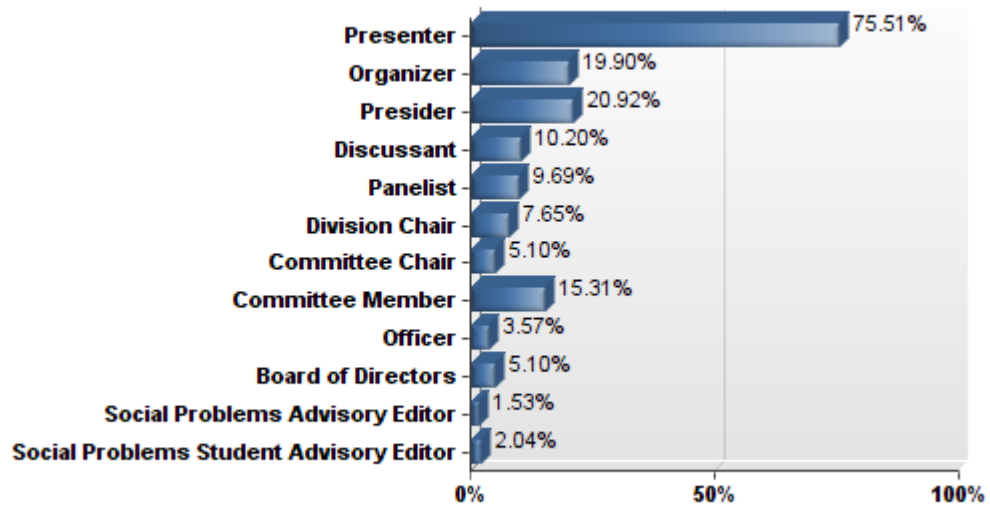
(Presenter, Organizer, Presider, Discussant, Panelist, Officer, Division Chair, Committee Chair, Committee Member, Board of Directors, Social Problems Advisory Editor, Social Problems Student Advisory Editor)

#	Answer	Response	%
1	Yes	196	90%
2	No	21	10%
	Total	217	100%

11. Please indicate the roles you played at the Annual Meeting.

This question was asked only to program participants.

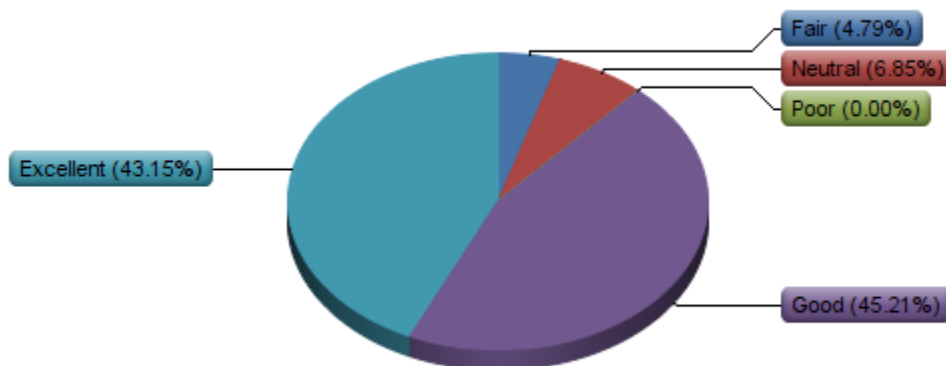
#	Answer	Response	%
1	Presenter	148	76%
2	Organizer	39	20%
3	Presider	41	21%
4	Discussant	20	10%
5	Panelist	19	10%
6	Division Chair	15	8%
7	Committee Chair	10	5%
8	Committee Member	30	15%
9	Officer	7	4%
10	Board of Directors	10	5%
11	Social Problems Advisory Editor	3	2%
12	Social Problems Student Advisory Editor	4	2%
Statistic		Value	
Total Responses		196	



12. Please rate your experience of the online Call for Papers submission process for the Annual Meeting.

This question was asked only to program participants.

#	Answer	Response	%
1	Poor	0	0%
2	Fair	7	5%
3	Neutral	10	7%
4	Good	66	45%
5	Excellent	63	43%
	Total	146	100%



13. You said that you are dissatisfied with the online Call for Papers submission process. Please tell us why you are dissatisfied.

Optional follow-up text response from respondents who selected "Fair" or "Poor"

I remember the website being somewhat difficult to navigate and it was hard to figure out what the requirements were.

The directions for submissions were too long without being clear. They were also buried in the SSSP website.

Titles of sessions to specialized. Insufficient number of papers actually submitted to session although found them in pool

I had to seek out technical assistance in order to submit my proposal. The assistance was fine, but it should not have been necessary. I think the problem was that I had been using Internet Explorer instead of Mozilla Firefox, but I'm not sure why this should have been a problem. If it continues to be a problem, it would be a good idea to include the search engine issue in the instructions for submitting the abstract

I did not receive the call until after the deadline

There were issues with loading my paper.

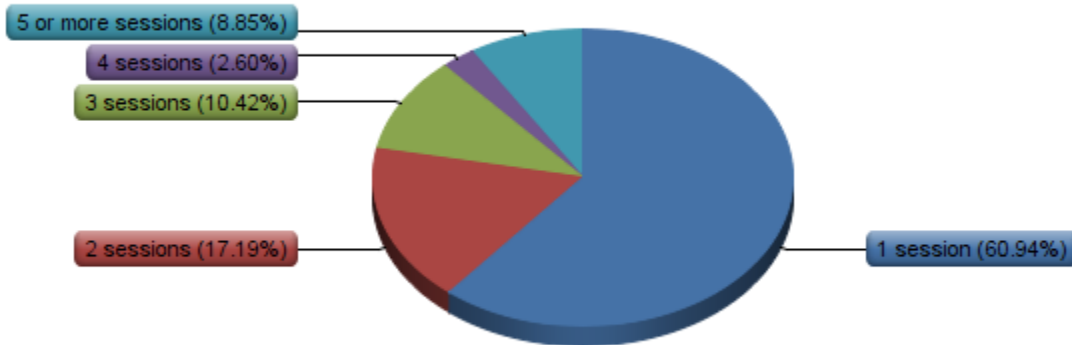
I had trouble uploading my paper and I couldn't tell afterwards if it had been uploaded properly. I had to email the website admin to see what was going on. Everything was eventually resolved but I felt like the technical glitches took up a lot of my time.

Statistic	Value
Total Responses	7

14. How many sessions did you participate in at the Annual Meeting?

This question was asked only to program participants.

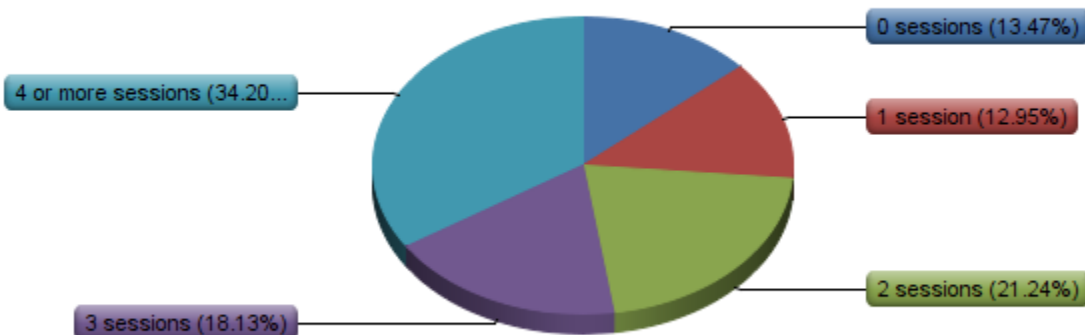
#	Answer	Response	%
1	1 session	117	61%
2	2 sessions	33	17%
3	3 sessions	20	10%
4	4 sessions	5	3%
5	5 or more sessions	17	9%
	Total	192	100%



15. Approximately how many sessions did you attend at the Annual Meeting, aside from those you participated in?

This question was asked only to program participants.

#	Answer	Response	%
1	0 sessions	26	13%
2	1 session	25	13%
3	2 sessions	41	21%
4	3 sessions	35	18%
5	4 or more sessions	66	34%
	Total	193	100%



16. Please specify reason for not attending more sessions, aside from those you participated in.

This question was asked only to program participants.

Optional follow-up text response from respondents who selected "1" or "0"

I would have love to attend more, but did not have time in my schedule unfortunately.

I did not have enough time.

I spent most of my time preparing for my own presentation leading up to my session. My focus is more immigration related and I did not find many related sessions to attend this particular year. I am most interested in professional development workshops, but the one I wanted to attend met at the same time as my own presentation.

I was not feeling well.

too many conflicting sessions at ASA and other related meetings
time

I prefer to hang out and talk with people, to some degree, and thus be able to help younger scholars. Also, I had a busy ASA schedule

As division chair I had meeting responsibilities. I also had officer responsibilities at asa

The panels/sessions' topics did not at all interest me. They were research and general areas that fell outside of my own.
Difficult online program

Lack of interest

Lack of time, not lack of interest.

Busy with my own stuff.

Time and money

I wish I could have attended more session but I was teaching on Thursday and Friday and my family's vacation -- which we scheduled a year out -- started on Sunday. I wish I could have attended more and will make every effort to do so next year.

I was attending sessions at ASA, and I did not come early enough to also participate inSSSPs events because then the stay becomes long and expensive.

Busy at meetings

I could not afford to stay in the hotel and returned home the same day I presented. I drove up from Los Angeles.

Too many commitments, including presenting at ASAs

Other ASA sessions

time. overlap with ASA. burnout.

Preparing for own session and sight-seeing.

Came to San Francisco with my family and spent time with them.

Sessions at ASA, time/cost of staying in San Francisco, poor quality of my session

A mix of child care responsibilities, not a ton of sessions I was interested in, and attending both SSSP and ASA.

Time conflicts with ASA and personal meetings.

Too many things going on with ASA, ASA Directors' Conference, and meetings at both SSSP and ASA.

There were no events connected to my scholarly interests or expertise.

ASA conflicts

I had to cut the time at the meeting short due to relocating rather suddenly.

Had to leave early for family reasons.

I love SSSP and usually attend more sessions. But this year, I had a lot of meetings with colleagues that took up most of my conference time (FYI, I didn't get to any ASA sessions outside of the one I presented in. SSSP fared better than ASA! It was just an uncharacteristically busy time.) Although I also have to note that some of my "stretched thinness" was also a result of the lateness of the conference. My semester started on Wednesday. I was also managing a lot of home-department related things while at the conference. Next year, I will probably not be able to attend at all.

I had so much committee work between my SSSP division meetings and my responsibilities as co-chair of another committee in a different sociology organization that was there.

various board and business meetings at SSSP, three more sessions at ASA to participate in, etc.

busy with dision chair responsibilities and personal commitments

had to participate in ASA was visiting friends in SF

would love to attend more, but the overlap with ASA and SSSI limits my participation

I hadn't been to San Francisco in 10 years and was keen to explore the city. I can read academic papers any time, but I can't see the Presidio or Golden Gate at any time.

moving between ASA and SSSP was very busy!

There were so many sessions occurring at ASA that were in my area of specialty, and these unfortunately overlapped with the sessions I was interested in attending at SSSP.

Major house renovation emergency.

relevance to my research

Time constraints, and also responsibilities at other meetings.

Time constraints mostly.

Was attending ASA

I was in sessions

This year, I attended divisional chair business meetings for the first time. I focused my attention on divisional business, meeting with potential organizers, etc. between sessions. Next year, I intend to attend more sessions.

There were none related to my research (i.e. racism in Europe, decoloniality)

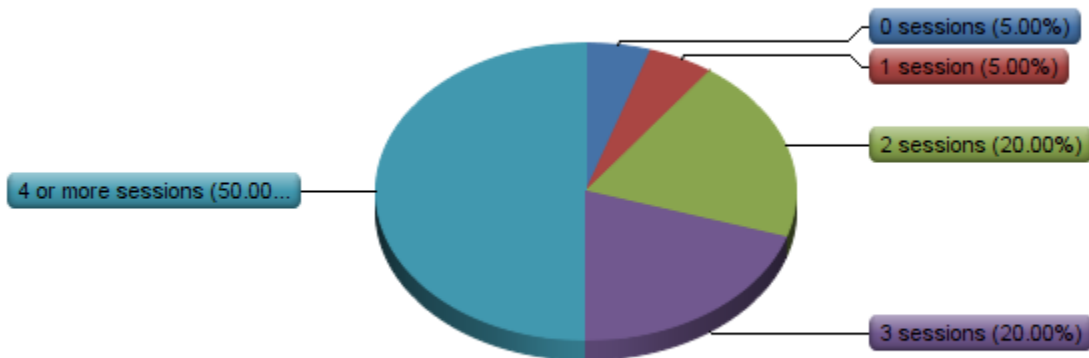
My time was taken up at ASA.

Statistic	Value
Total Responses	49

17. Approximately how many sessions did you attend at the Annual Meeting?

This question was only asked to non-program participants.

#	Answer	Response	%
1	0 sessions	1	5%
2	1 session	1	5%
3	2 sessions	4	20%
4	3 sessions	4	20%
5	4 or more sessions	10	50%
	Total	20	100%



18. Please specify reason for not attending more sessions.

This question was only asked to non-program participants.

Optional follow-up text response from respondents who selected "1" or "0"

unable to attend due to circumstances beyond my control. No committee on which I served or wanted to serve met.

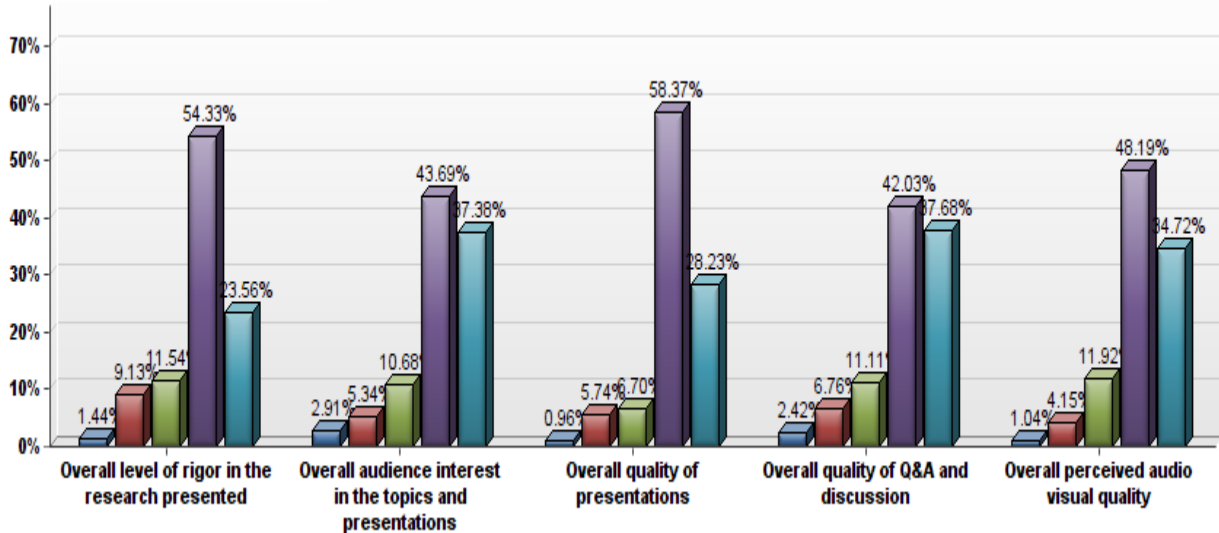
There were no sessions focusing on my very narrow topic of study. I did however, attend the planning meeting for my Section, the new member breakfast, and volunteered at the registration table.

Statistic	Value
Total Responses	2

19. Please rate your experience of the session(s) you attended at the Annual Meeting.

#	Question	Poor (1)	Fair (2)	Neutral (3)	Good (4)	Excellent (5)	Total Responses	Mean
1	Overall level of rigor in the research presented	3	19	24	113	49	208	3.89
2	Overall audience interest in the topics and presentations	6	11	22	90	77	206	4.07
3	Overall quality of presentations	2	12	14	122	59	209	4.07
4	Overall quality of Q&A and discussion	5	14	23	87	78	207	4.06
5	Overall perceived audio visual quality	2	8	23	93	67	193	4.11

■ Poor ■ Fair ■ Neutral ■ Good ■ Excellent



20. You said that you are dissatisfied with some aspect of the session(s) you attended. Please tell us why you are dissatisfied.

Optional follow-up text response from respondents who selected "Fair" or "Poor"

The papers presented on the same panel had very different topics and it seemed like the audience was not interested in all of them.

The presentations were not very rigorous.

I understand that SSSP has aired on the side of inclusivity, but the quality of most presentations is really low. Frankly, not everyone should be allowed to present. I am in support of a poster session that allows participation but does not place undeveloped papers in a full paper session.

Why do we pretend that people will actually attend sessions at 8:30 in the morning? I was on two 8:30 panels this year and the total audience attendance for the panels (combined) was 1. The second session there was literally no one there but presenters. This means that either SSSP is putting together some terrible panels, or (much more likely) no one is getting up at the crack of dawn to go see a panel with no one they know on it. Why don't we just admit these meetings are as much about getting drinks with old friends as they are about research, and admit to ourselves no one is going to bother getting up that early to attend a session. Either start the sessions at 10 or put the widely-known scholars in the early morning sessions. Otherwise, it's just a waste of time to even bother showing up if you're scheduled in the first session of the day.

Not as much facilitated discussion.

The rigor of some of the presentations was not very high. Several faculty presentations were ill-prepared and provided off-the-cuff presentations that were neither thought through nor related specifically to applied social science problems. This was disappointing, especially for faculty who have attended this conference many times.

Discussants didn't do their job in any of the sessions I attended, particularly in regard to asking critical questions.

Uninteresting, and presenters generally don't understand time limits

There were very few attendees to many of the sessions I attended.

For the one session I attended, there were 3 audience members and 3 presenters. The discussant and moderators and preaider were presenters. The session organizer was absent both before the presentation when I tried to get in touch and during the conference.

Expectations of Critical Dialogue sessions need to be fully outlined and explained to presenters. I witnessed full papers (15-20 minutes) being drawn out at 2 Critical Dialogue sessions. In one session, the poor presider had to deal with an unbearable presenter who refused to do less than a 20 minute presentation and then was upset by the fact that he could not engage in Q&A afterwards.

After 39 years as a research sociologist, I was amazed at the lack of rigor and awareness of social context in the papers I heard.

The computer/projector in our room did not work. Techs spent nearly a hour fixing it, draining our time and audience. By the time it was fixed we did not have any attendees other than presentors and discussant.

Lack of rigor in work presented, work not relevant to topic of panel

Without a discussant paper presenters did not receive adequate feedback to improve paper presented.

One session I was in seemed to have a "random" paper included in it (it wasn't a "bad" paper -- but it had NOTHING to do with the other presentations), some papers were rather weak... but that's okay

Generally I feel like our organization needs to do a better job of presenting ourselves to the public and other sociologists. One problem that I have noticed is that the quality of presentations is lacking and is not very rigorous. Each year I present empirical research that I have spent a great amount of time on. However in my sessions there's at least one person who has done little more than a lit review....

Some papers are under-developed and just not at the stage where presenting research is appropriate. The only way around this is to require full-length papers upon submission, which will drop participation (unless SSSP creates a "Roundtables" option where papers-in-progress can receive critical feedback as they develop).

Much more "student research in progress" than recent years. Would like to see some rigorous scholarly work and professional activism

The session was not well-attended, to say the least! Perhaps only 1 person aside from presenters.

I was a bit shocked at the lack of concern demonstrated by other presenters on my panel regarding ethical standards of conducting human research. This concern is outside the scope of the conference organizers.

The tech team was great and I noticed that some projectors in other rooms were fantastic. However, the projector in ours was pretty dark. Also, the room itself was poorly lit.

Use of audio enhancement technology and power point was not available in each room. Very hard to hear most presentations

Presiders not prepared. No AV set up. Presenters put into panels that were not related to their topic. Poor communication between presider and panelists.

The technic wasn't satisfying.

Early Sunday morning sessions are unfair to presenters, organizers, and the very few attendees. Nothing should be scheduled before 10 am on Sunday.

Statistic

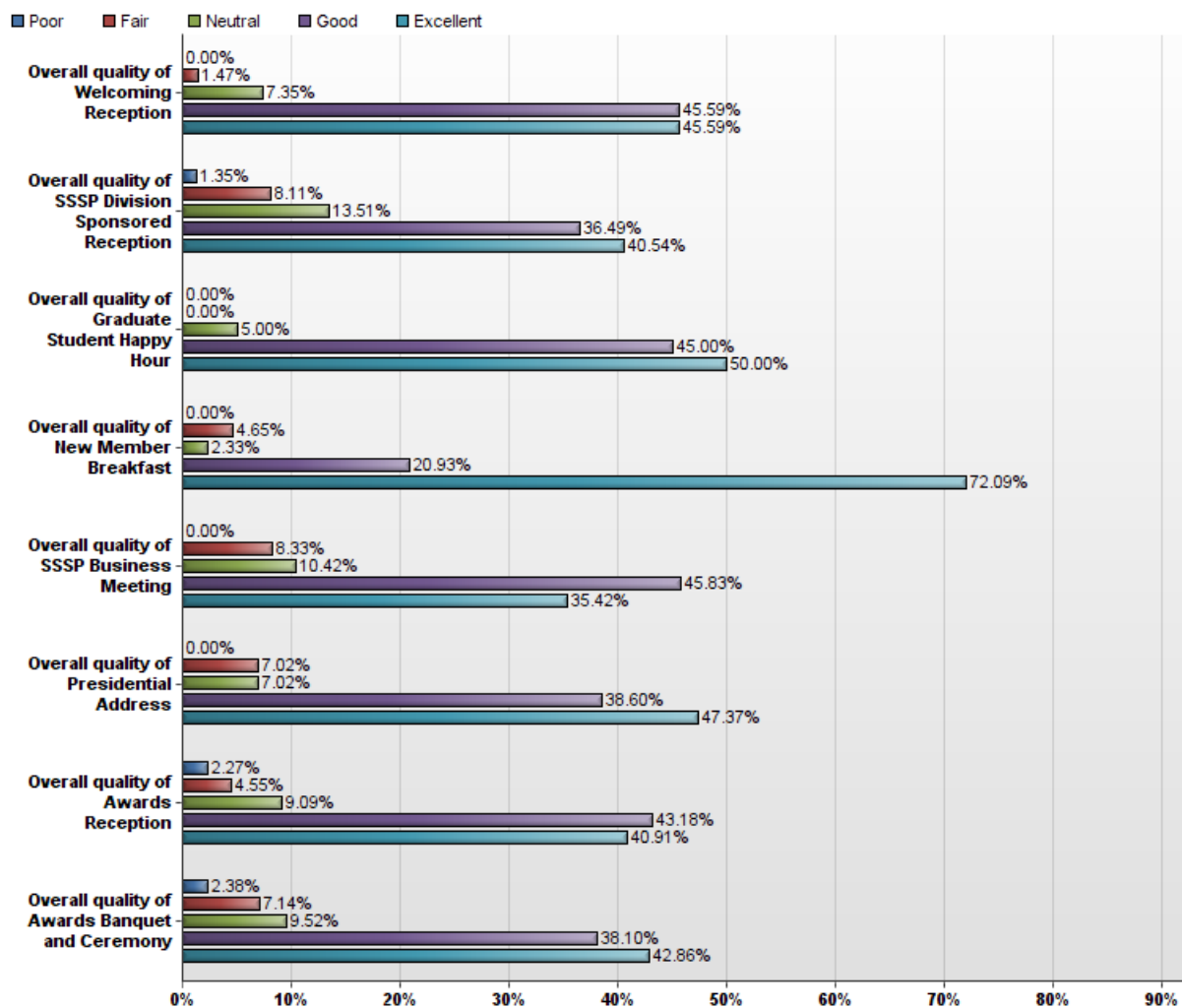
Value

Total Responses

26

21. Please rate your experience of the reception(s) and special events you attended at the Annual Meeting.

#	Question	Poor (1)	Fair (2)	Neutral (3)	Good (4)	Excellent (5)	Total Responses	Mean
1	Overall quality of Welcoming Reception	0	1	5	31	31	68	4.35
2	Overall quality of SSSP Division Sponsored Reception	1	6	10	27	30	74	4.07
3	Overall quality of Graduate Student Happy Hour	0	0	1	9	10	20	4.45
4	Overall quality of New Member Breakfast	0	2	1	9	31	43	4.60
5	Overall quality of SSSP Business Meeting	0	4	5	22	17	48	4.08
6	Overall quality of Presidential Address	0	4	4	22	27	57	4.26
7	Overall quality of Awards Reception	1	2	4	19	18	44	4.16
8	Overall quality of Awards Banquet and Ceremony	1	3	4	16	18	42	4.12



22. You said that you are dissatisfied with some aspect of the reception(s) and special events you attended. Please tell us why you are dissatisfied.

Optional follow-up text response from respondents who selected "Fair" or "Poor"

Banquets are antiquated and expensive. The SSSP Awards Banquet needs to be replaced with something that takes less time and that does not cost as much.

I couldn't even find the division meeting because someone with authority made a false announcement in a session I attended. I was not the only person I saw in the wrong place.

The food was good, but the presentation of awards was flat, not well organized ... the room was not good either ...

Food quality and choices were mediocre. The venues of reception and banquet were sub-standard.

I don't really understand the purpose or function of the division reception. It seemed people were there for the free food. If the intent is to recruit members to join divisions, I don't think the money was well spent. I was saddened that so few members attended the presidential address. I remember when they were held in large ballrooms and the seats were filled. Given that we had an unprecedented number of registrants, it is sad that so few people showed up for the president's talk.

I was rather shocked at the prices of two drinks at the cash bar for the Awards Reception (if I recall it was \$14 which is "highway robbery" even my convention hotel standards for a bottle of beer and a glass of wine!).

with tables no one really gets up and visits because you are afraid of losing your seating and/or food. with large roundtables people seem more apt to get up and visit.

Presidential address not theoretically informed as in previous years; added little to the study of poverty. Banquet too expensive to attend; missed the awards.

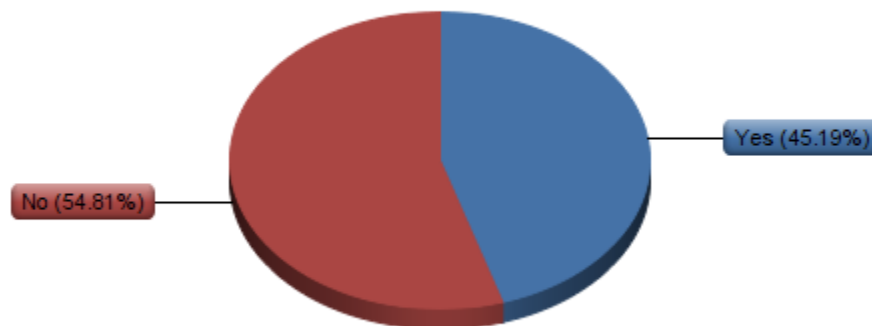
The division reception was crowded and in a space that was hard to navigate.

Not enough food or places to sit

Statistic	Value
Total Responses	10

23. Did you stay at the San Francisco Marriott Marquis?

#	Answer	Response	%
1	Yes	94	45%
2	No	114	55%
	Total	208	100%



24. What was the main reason you did not stay at the conference hotel?

Optional follow-up text response from respondents who selected "No"

There were not enough reserved rooms.

lack of space, price

No rooms available by the time I booked.

It was too expensive.

I had a free place to stay.

No rooms

It's absurdly expensive. If I were to stay in the actual conference hotel, that would have exhausted my entire travel budget for the year.

I live in the area.

Too expensive

Was sold out

I live in San Francisco.

The conference hotel was full by the time I went to book hotels in July.

cost, stayed with a friend

expensive

Far too expensive for a graduate student. Our travel funding is a reimbursement, which means we have to pay up front from our own money. Given our lack of summer funding, this money did not exist for students in my department. I stayed at a hostel.

I was staying at the ASA conference hotel.

I stayed at ASA conference hotel. My wife went to ASA but not SSSP

I stayed at the asa hilton hotel. Proximity of both hotels to each other played a positive impact

I couldn't get a room or I would stayed there. It was already full when I tried after finding out what day I was a presenter.

Already full when I went to book

TOO EXPENSIVE!

I stayed at the SSSI hotel because I was participating in that conference too.

Cost

cost

I had student housing for the ASA honors program

I live in San Francisco

I live in San Francisco

My stipend from work could not cover hotel and I had family in town

because i was only there for the day and I have family that lives in the bay area

I stayed at another hotel with friends who were participating on asa . the other hotel was more convenient for all of us and close enough to the Marriott marquis.

It was booked out.

Too expensive

It was too expensive.

Stayed at ASA hotel

I never stay at the conference hotel.

the cost

Too expensive.

No room availability

Too expensive.

Stayed with friend in Berkeley

Live in the bay area

cost

I stayed at a hostel steps from the SSSP and ASA meetings hotels: I am an adjunct and am not about to spend a thousand dollars plus on a hotel room.

local

too expensive as a grad student. I stayed at a hostel nearby.

Roomed with someone who booked a room at one of the ASA hotels.

Cost.

Stayed in Oakland with a friend for free. Hotel was too expensive for a graduate student, even at double occupancy.

Budget limitations. The hotel was not willing to accept or accommodate for the government rate/per diem.

I live in SF

Cost too high

All rooms at the conference rate were booked by the time I registered.

Financial reasons

too expensive for a grad student

No rooms were available

because I had alternative housing

By the time I tried to make the reservation, it was full.

cost. as an independent researcher who attends several conferences per year it was cheaper to stay outside of the city and take the train in

I got reservation at the Hilton, one of the hotels for the ASA meeting.

Was planning to stay with a friend. Hotel filled after her death and waiting list, if there was one, would not clear in time for me to get SSSP rate.

Too expensive.

Too expensive, given travel from the East Coast.

Because of high charge

too expensive

Stayed at another conference hotel

exploitation/bad treatment of hotel workers...not necessarily at this hotel but at hotels in general. i'd rather support the sharing economy.

Staying at hotel of another conference

it was sold out

I found a cheaper alternative nearby.

Expense

Better deal elsewhere.

It was too expensive and there were no more rooms left at the group rate.

Cost

I used the SSSP roommate matching service (which I greatly appreciated, and will use again), and the roommate I paired with had already booked at another hotel.

no rooms available

I was rooming with a friend at one of the ASA hotels

I'm a full-time graduate student, so the cost of the hotel was a little high.

I was with my family and we pursued other accommodation that was more affordable.

Too expensive

I live in San Francisco.

price

Too expensive-traveling with family so stayed in the suburbs-free parking and free breakfast

I live in San Francisco

availability

Too late in booking a room.

Cost.

Too expensive. I know you follow ASA but having a conference in NYC and then SF is really hard on budget.

Attended another conference (SSSI) and stayed in their hotel

I stayed at the other hotel as I was attending several conferences at the same time.

Price

Cost.

cost

Stayed with family

Live in the host city

rooms were gone when I tried to make a reservation -- not too long after they were made available!! People should be told to register soon.

too expensive

Too expensive

Price

I shared a room with three other people from my department who were only presenting at ASA.

costs

Cost

Cost

Price.

Price

Too expensive.

I live in the bay area.

Cost

Too expensive

Free lodging with friend.

Cost

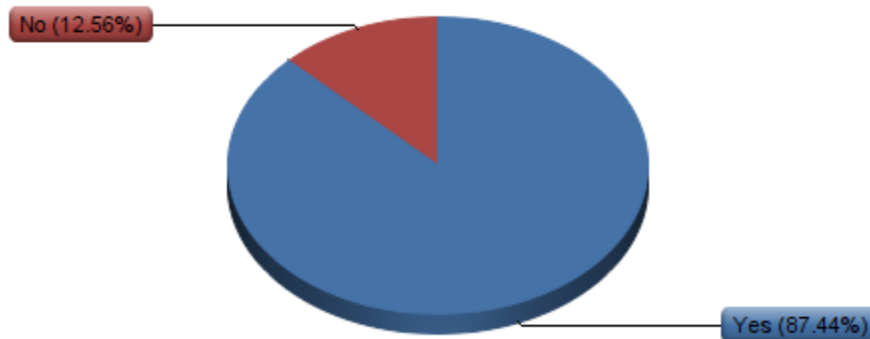
There were many quality hotels in the area available for a lower price.

I did not register for housing in time; all negotiated rooms were taken.

Statistic	Value
Total Responses	112

25. Are you likely to attend the 2015 meeting in Chicago?

#	Answer	Response	%
1	Yes	181	87%
2	No	26	13%
	Total	207	100%



26. What is the primary reason that you are unlikely to attend the 2015 meeting in Chicago?

Optional follow-up text response from respondents who selected "No"

timing and cost

Traveling fees

I wanted to try out the SSSP conference as I respect Social Foces publication, but I cannot commit to future conferences at this time due to grant funding.

I didn't find the meeting particularly applicable to my work

Other obligations

I can't afford to travel there

The timing. It will be too late in August and I have to begin work.

I'm unlikely to present.

I do not fly unless I have no other choice, and it costs too much to attend.

SSSP is too small and marginal.

Potential schedule conflict

I've heard the meeting will take place after the start of the semester at my university.

Disappointment in panel participated in, cost of attending the meeting

Won't be submitting a proposal.

The timing. I don't have the academic calendar for 2015 yet, but based on the typical start date, the conference with coincide with the beginning of the Fall semester.

I found the topics of sessions too disparate and the quality of the research presented often too low.

The meeting is scheduled too late. My college will start before the meeting dates.

I typically attend ASA not SSSP. My sense is that ASA sessions tend to be better attended.

Too many book events.

timing

schedule conflict

Change in academic calendar (classes starting earlier than usual).

Poor attendance. I presented at a roundtable and no other presenter (there was supposed to be 3 more) or presider showed up.

costs

Statistic	Value
Total Responses	24

27. What is your primary employment type or affiliation?

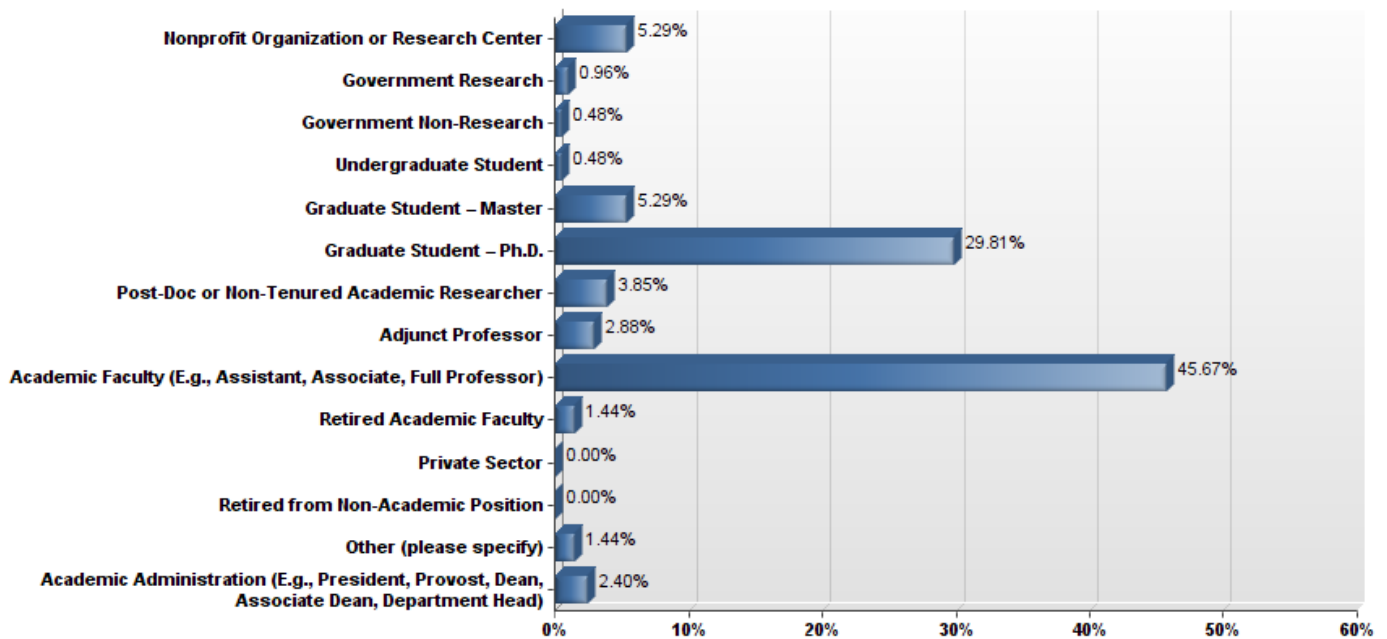
#	Answer	Response	%
1	Nonprofit Organization or Research Center	11	5%
2	Government Research	2	1%
3	Government Non-Research	1	0%
4	Undergraduate Student	1	0%
5	Graduate Student – Master	11	5%
6	Graduate Student – Ph.D.	62	30%
7	Post-Doc or Non-Tenured Academic Researcher	8	4%
8	Adjunct Professor	6	3%
9	Academic Faculty (E.g., Assistant, Associate, Full Professor)	95	46%
10	Retired Academic Faculty	3	1%
11	Private Sector	0	0%
12	Retired from Non-Academic Position	0	0%
13	Other (please specify)	3	1%
14	Academic Administration (E.g., President, Provost, Dean, Associate Dean, Department Head)	5	2%
	Total	208	100%

Other (please specify)

Lecturer & Researcher (NTT)

Non-tenured research professor

publisher

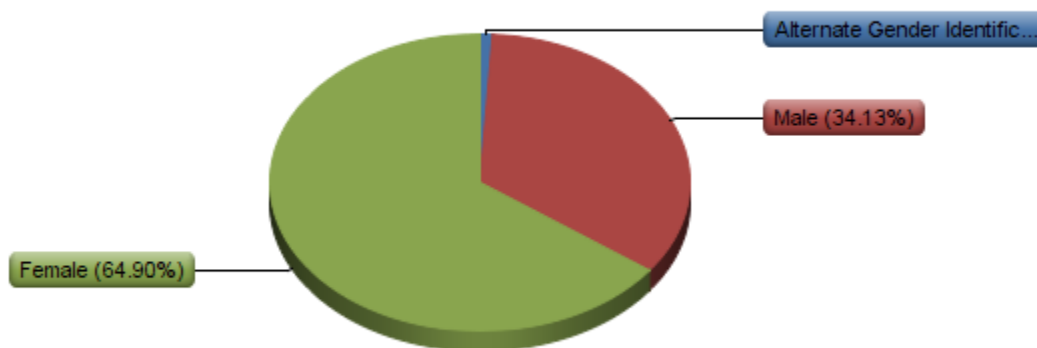


28. What is your gender?

#	Answer	Response	%
1	Alternate Gender Identification (please specify if you wish)	2	1%
2	Male	71	34%
3	Female	135	65%
	Total	208	100%

Alternate Gender Identification (please specify if you wish)

Cis-female
trans



29. Please specify your racial/ethnic identification.

#	Answer	Response	%
1	American Indian or Alaska Native	1	0%
2	Asian	20	10%
3	Biracial/Multiracial	4	2%
4	Black or African American	11	5%
5	European American	6	3%
6	Hispanic or Latino	9	4%
7	Native Hawaiian or Other Pacific Islander	0	0%
8	White, non-Hispanic	142	68%
9	Other (please specify)	15	7%
	Total	208	100%

Other (please specify)

White, Jewish

I'm not american.

black/ white

Anthropologist.

I do not find these categories appropriate

European

from south asia

European

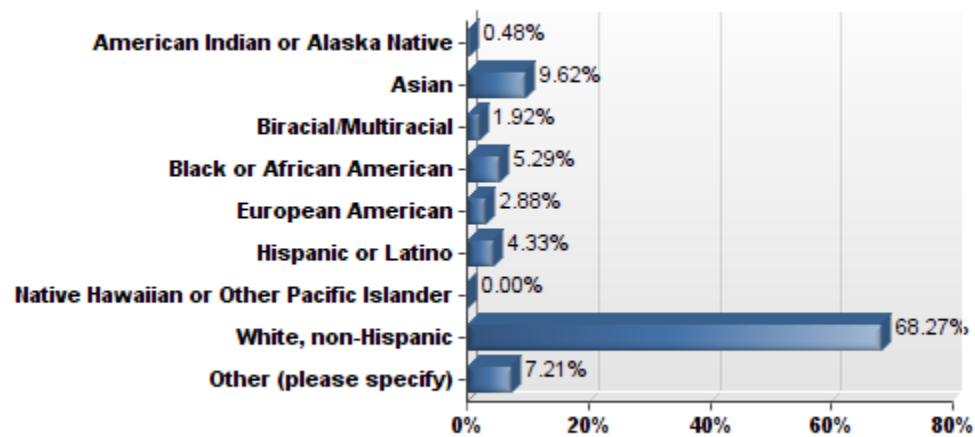
White and Hispanic

Canadian!!!

Canadian

European

European	
Liberian	
Statistic	Value
Total Responses	208



30. The SSSP strives to ensure that meeting facilities are accessible to all, including people with disabilities, health challenges, or other differences. If you had any accessibility difficulties or if you noted something that could be a problem for others, please share that information here. If you wish to inform us of some accommodation or access that worked particularly well, we would welcome that feedback as well. Also, please feel free to contact the Chair of the SSSP's Accessibility Committee, Rebecca Wiersma, rwiersma@madonna.edu with your concerns.

Text Response

Affordability is a major access issue, one that SSSP should really address. I understand the need for a conference hotel large enough to house the entire meeting, but between flight, registration, and lodging, attending a conference runs north of \$1,000 pretty easily. This is an impossibly high rate for grad students, adjunct faculty, and all other scholars on the margin.

The podium for the business meeting might have been difficult to navigate for those with mobility issues involving stairs. I suggest using a ramp if possible. Alternately, it could be helpful to have a microphone at the same level as the seating and/or a microphone that can be passed to individuals who would like to comment.

Problem with mic quality in Presidential address. Had problems hearing. Also, columns in the way so difficult to see slides.

N/A

It would be nice to have scent-free hand soaps in the restrooms, as was the case in Denver.

The room was great, but the heavily discounted rooms were gone too early. Had a good room, nonetheless, and the free WIFI was great (Anthros don't provide that, even though they charge much more for registration.) The new member breakfast was great, both eats and meets.

I have age-related hearing loss, which makes it difficult to hear certain voiced presentations. A system of voice amplification should be used in all sessions for people how have this and allied hearing loss.

It would have been nice to have a full 30 minute lunch break for all where there are no panels. I felt compelled to skip entire sessions before noon or after noon in order to eat. Some people must eat on a regular schedule (to take medicines, avoid low blood sugar, etc.) I thought that the panels were too long compared to other conferences such that a 30-60 minute break for all participants could have been created. I suggest breaking sessions into 80 minute intervals

instead of 100 minutes. 80 minutes provides for 4 presenters at 15 minutes each plus 20 minutes of discussion. I think would be more reasonable on those who would like dedicated time to eat and better for the audience (sitting for 100 minutes is a long time). I appreciated having access to a large bathroom (with numerous stalls) so that those who were not staying at the conference hotel had a place to go between sessions. I also liked the numerous couches and tables for those who needed a break to sit or wanted to catch up with friends.

NA.

Hotel Location can be a problem if the hotel is far from other Sociology organizations meetings that take place at the same time. For example, SWS did not meet at the SSSP hotel even though SSSP has been very supportive of past SWS Presidents and members whose own reputation and activities reflect SSSP members support via dues to SSSP that provided them with the opportunity to advance in their own careers. When ASA and SSSP overlap, persons with disabilities who attend both may choose to stay at the ASA hotel, if they can afford it, if there is no appropriate free shuttle service taking them back and forth from sessions and social events at the ASA.

Could we ask folks if they have a disability on this survey with a choice of "Choose not to share"? It might give us some good information. We could follow up the "yes" answers with questions about general type of disability: mobility, vision, hearing, or something along those lines and then ask if the meetings were accessible with space for comments. well don other than audiovisual concerns.

I really appreciate having multiple all-gender bathrooms on site.

N/A

Please remind presenters to speak slowly and clearly. Except for a few experienced professors, many people spoke very quickly and not very clearly. This effort to speak slowly and clearly will help those with hearing loss and also those whose first language is not English.

N/A

none

Difficult to hear. Space has stairs. Reception for spacious enough for wheelchair rider

n/a

Statistic

Value

Total Responses

19

31. Do you have any comments or thoughts about any aspect of the Annual Meeting, including ways in which we can improve for next year? Further, if you would like to be contacted regarding this survey, please send an e-mail to Sharon Shumaker, IT Specialist, at sharon.shumaker@utk.edu and include "Annual Meeting Survey" in the subject line.

Text Response

Thank-you Michelle and Team for another excellent meeting.

Please have more faculty/non-academic PhD mentors. Greater inclusion of non-academic sociologist activists would be nice.

More professional development workshops - publishing, teaching, finding a job in and out of academia

Sessions beginning at 8:30 may be too early. From what I saw, they had very low attendance. Perhaps 9 am is a better start time. Thank you.

I suppose this isn't a SSSP critique per se, but I am surprised there wasn't more critical sociology posed towards health and healthcare.

I really like this conference - one of the 3-4 sessions I attended was low quality but the others were very good - I wish this survey had been sent out earlier because I have already forgotten the particulars of the conference, let along the process of registering and submitting

I had wanted to go to the Drinking and Drugs party, but had to chair the Sociology AIDS Network meeting instead :(The Marriott Marquis was such a great venue for the meeting and the hotel accommodations were wonderful as well (clean, quiet and reasonably priced for the city). I hope that the Chicago venue will be good as well - it can make such a big difference for the tenor of the conference! Thanks for all of your hard work!

N/A

It's nice to be relatively close to the ASA meetings. It's nice to have a better hotel at more reasonable rates than at ASA. I really liked to briefcase/computer case provided with meeting materials!

It would be great to have more participation by applied researchers and activists who also do research.

Highlight in larger and bold letters the Business Meeting and presidential address. Make sure the incoming president is there to receive the gavel. Make student award ceremony more exciting, more personal, and acknowledge family members in attendance

The awards banquet was too late.

More round-table discussions of student papers.

I love going to the movie sessions -- was this offered this year? I also think it is better to have the Presidential Address earlier in the day -- this time it was very late in the day and that is why I think attendance was compromised.

it would have been nice to get feedback on the paper i presented, but the discussant did not give any. with the looser panels (in comparison to ASA), i feel there's less of a takeaway from presenting. the other panelists' work was fairly different from mine, and i got no real substantive feedback from the 'discussant' or the audience.

I attended a roundtable for which the presider did not show up. I think she was never told that she was going to preside over this roundtable. I have heard of this happening in the past -- that presiders were not informed that they were supposed to be presiding over sessions. It might help to find a way to confirm their participation before the meeting starts.

It would be helpful to include the field/department (in addition to their affiliation) of the presenters in the program. Since this is an interdisciplinary conference, it would be nice to know the presenters' disciplinary background.

The issues that I'd raise are ones that are already being discussed: the hotel is expensive; the banquet is expensive. Although I'm not a grad student, it would be great to try to find university/college dorm housing in the area that is not being used in the summer and offer that (to both grad students and others).

I love SSSP! It has been a great home for me as a graduate student with its welcoming environment and interesting topics presented.

I know this is a major problem that has been hashed over for decades, but is there any way for a greater separation between the SSSP and ASA meetings?

I congratulate Michele, Sharon, Hector and the other officers in organizing another great meeting.

This is an outstanding conference, one of the best I have attended. This year's theme was of particular interest, as poverty and economic inequality are central issues that impact the fields of sociology and social welfare/social work. SSSP is a first rate organization, one that provides a useful forum for scholar-activists to engage in the dissemination of knowledge to advance social and economic justice. I am both pleased and proud to be a member.

Continue with the new member breakfast. It is just a fabulous event and I look forward to attending each year. The awards ceremony should have gone more quickly. Too much time passed by and people were leaving before it was over. Is there a way to get the winners to attend? If not, just give out a list of names and call it a day! It is awful to hear names called out and the awardees are not present!

I think that all sessions should have a discussant rather than just an organizer or presider.

I am concerned about the Thomas C. Hood Social Action Award recipient's work supporting the criminalization of consensual adult sex which explicitly goes against a SSSP 2011 Approved Resolution on Sex Work. Such a conflict needs to be addressed and prevented from occurring in the future.

More diversity in session topics

1. i appreciated the close clustering of conference hotels so that, on foot, attendees can easily attend more than one conference each day 2. there's always a sad irony about those who reflect on the conditions of those without power holding their discussions in expensive hotels in 'destination' locations. maybe one day we'll see a conference about the poor that the poor can afford to attend. instead of boutique hotels, let's see summer conferences use college or high school campuses, with hotel rooms in a motel 6 in oklahoma city, or rooming with farm workers in california's central valley. what would that do for our attendance ? and what would that say about us as people, let alone as researchers ? hmmm...perhaps a topic for research...

Cheaper! The hotel is so expensive (I stayed two nights, and my other two nights at a cheaper place around the corner), and the cost of travel-- it adds up to soo much.

None.

The high cost of this meeting is in itself a Social Problem. One can improve next year by making sure that the Program and Division Chairs treat all members with dignity and respect. Ideas submitted for one division should not fg
Could we make the online program easier to search? By topic? presenter? The physical program is great, but it takes too much time to search the online program.

SSSP should be held in cities that are struggling economically (to bring in the money associated with the conference) and/or less expensive to visit (so those who don't have a large income or travel budget can attend). I realize that SSSP is held along with ASA (and it's probably ASA that chooses the locations), but SSSP could make more of an effort to convince (and even shame) ASA on this policy. When I was standing in the lobby of the ASA hotel, I saw the signs reading "Hard Times" posted just in front of several elaborate chandeliers. It made me want to vomit. The hypocrisy is

outrageous. (And SSSP isn't really any better.) Why not hold the conference in New Orleans, Detroit, Pittsburgh, etc.?
Please have more vegetarian options at the division-sponsored reception.

N/A

Although it was my first time to attend SSSP Annual Meeting, I didn't have any trouble or confusion. The SSSP staff were friendly and helpful to answer my questions. I can't think of any suggestions.

would be great if we did not overlap with ASA

Drop the banquet like in New York and replace with a more affordable event.

N/A

A growing problem for many people, including me, is cost. Attending both SSSP and ASA becomes especially costly (prohibitively so) when ASA sections relevant to my research are scheduled at the end of that conference. Better, for cost containment, would be concurrent conferences. The result might be more conflicts among sessions of interest, but overall attendance might improve.

none

Many of the papers presented were not really applicable to the topic of the conference. Poverty was the general theme, yet many papers did not include poverty as a theme at all. There seemed to be an overarching theme of sexuality in the papers presented which would seem to fit next years theme better.

No

I look forward to the 2015 meeting in Chicago!

Great people, great conference

I think it would be useful if we started requiring session organizers to write descriptions of sessions and for session descriptions to be linked right in the call for paper interface.

This is the most expensive conference that I attend annually. I really wish location/hotel choice would be revisited.

It was our first SSSP conference and we were impressed, feel our University/College is a good fit and got a lot out of the experience.

More use of social media.

I really enjoyed the conference space at this year's meeting. Even though I did not stay at Marriott Marquis, the conference space was very conducive for commuters. It was easy to continue discussion from an attended session. I also chose to submit a paper for a critical dialogue piece this year, basing my decision on a session from last year's meeting. The session was poorly organized, there were few themes among the papers, and the discussion was not conducted in a way in which everyone had a chance to discuss their work. To me, it felt like the organizer needed more direction.

Statistic	Value
Total Responses	50