

Immigrant Poverty Alleviation Efforts

Safety-Net Programs and Self-Sufficiency in Santa Clara County

Julian Chow, Ph.D.
Professor
University of California, Berkeley
School of Social Welfare

Berkeley
UNIVERSITY OF CALIFORNIA

Catherine M. Vu, Ph.D.
Director of Research
Santa Clara County Social
Services Agency



SANTA CLARA COUNTY
SOCIAL SERVICES AGENCY

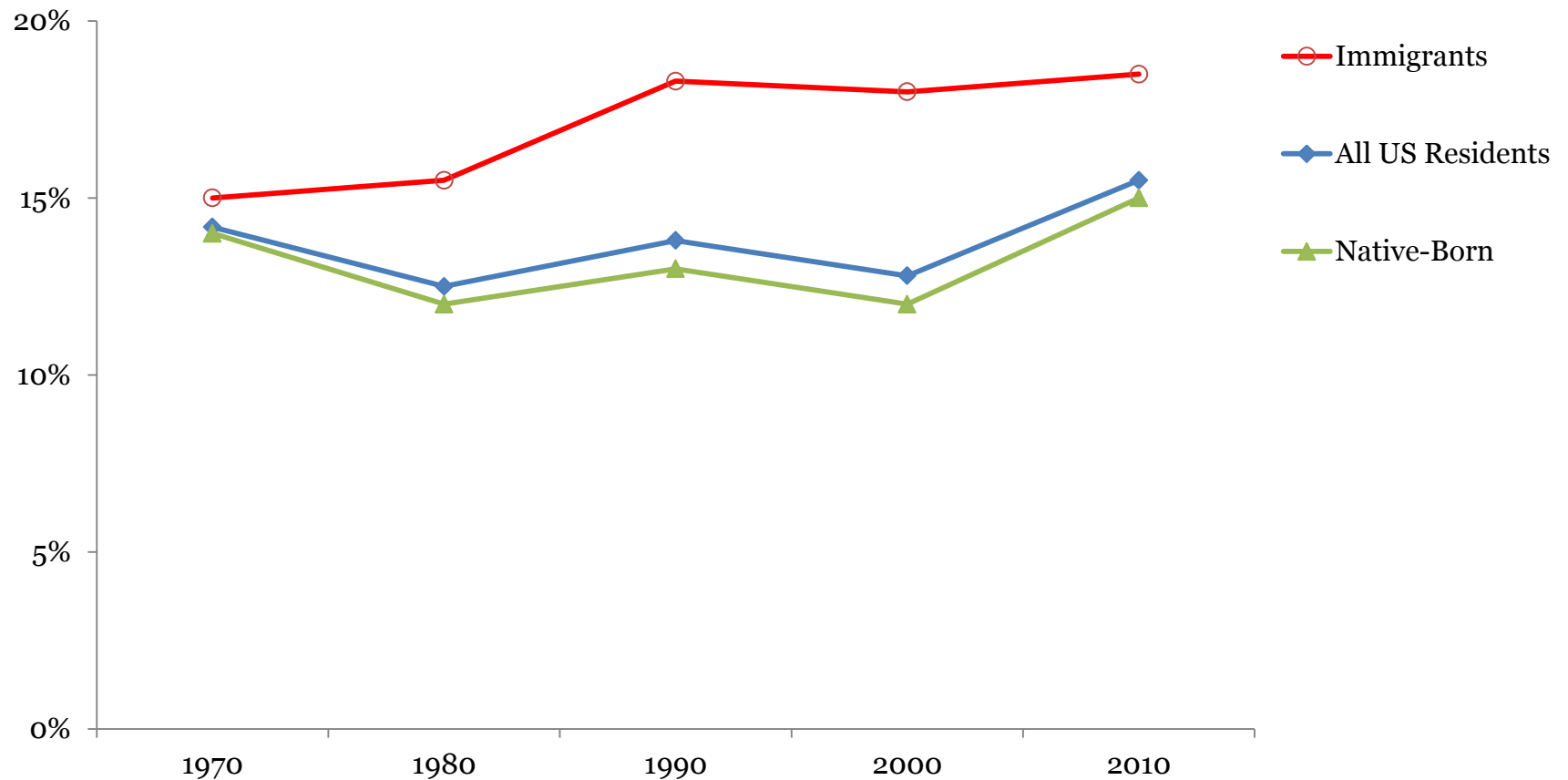
Acknowledgments

- Santa Clara County Social Services Agency
 - Office of Research and Evaluation
 - Decision Support and Research Unit

Background

- The US has immigration policies, but no *immigrant* policies
- A higher proportion of immigrants live in poverty than non-immigrants
- Immigrants face obstacles accessing public benefit programs

Figure 1: U.S. Residents below Poverty Level



Immigration in Santa Clara County

Santa Clara is a VERY diverse county...

- Located in the heart of Silicon Valley
- Top 3 places SCC immigrants come from....
 - Mexico (23%)
 - Vietnam (14%)
 - India (12%)

... with a LARGE immigrant population:

- Immigrants comprise 37% of the population
- Noncitizens make up 18% of the population
- 1/10 children are immigrants
- 60% of children have an immigrant parent



Figure 2. Rate of SCC Residents below Poverty Level, by Citizenship Status

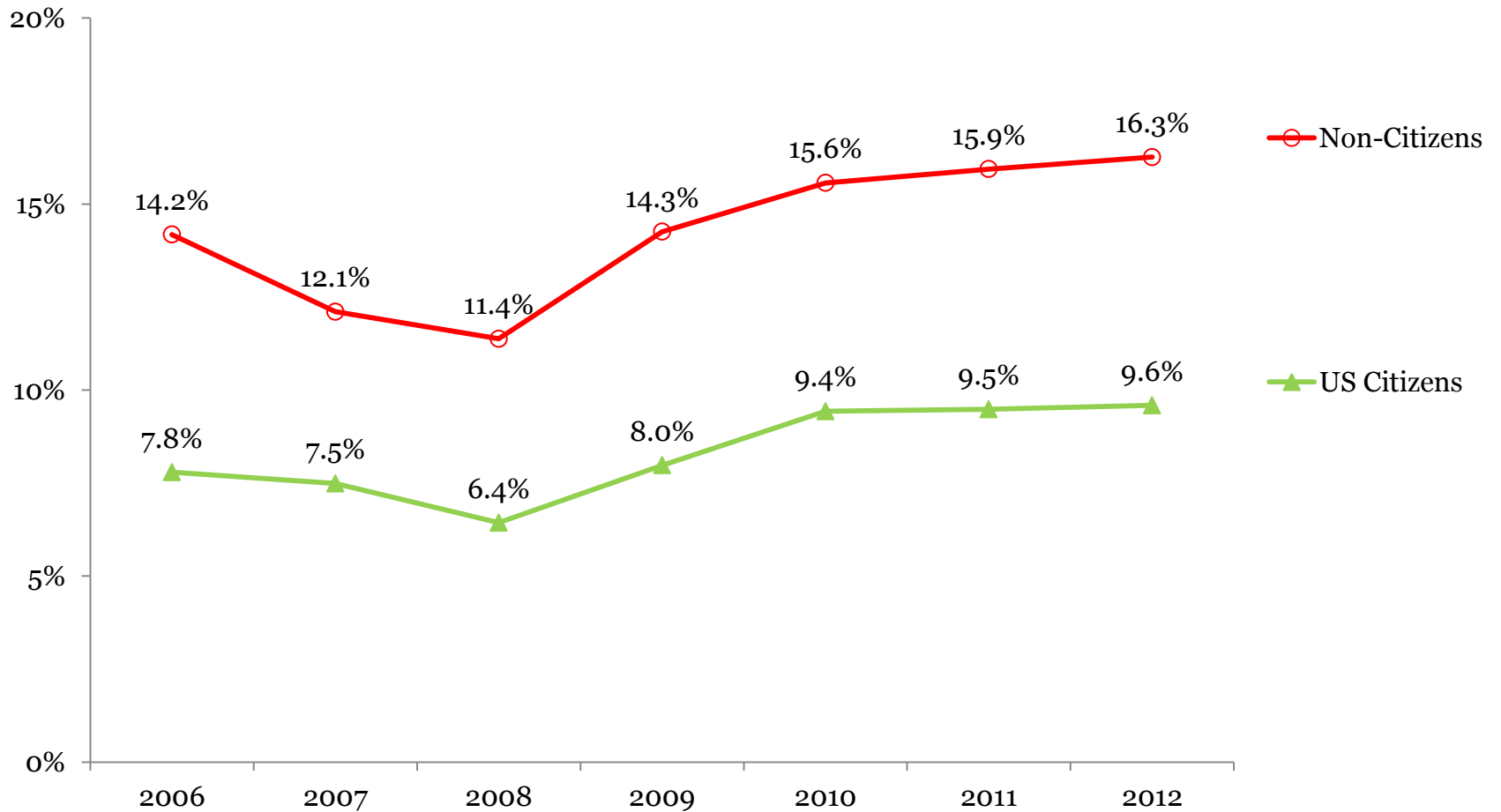


Figure 3: Overall Public Assistance Participation Rates

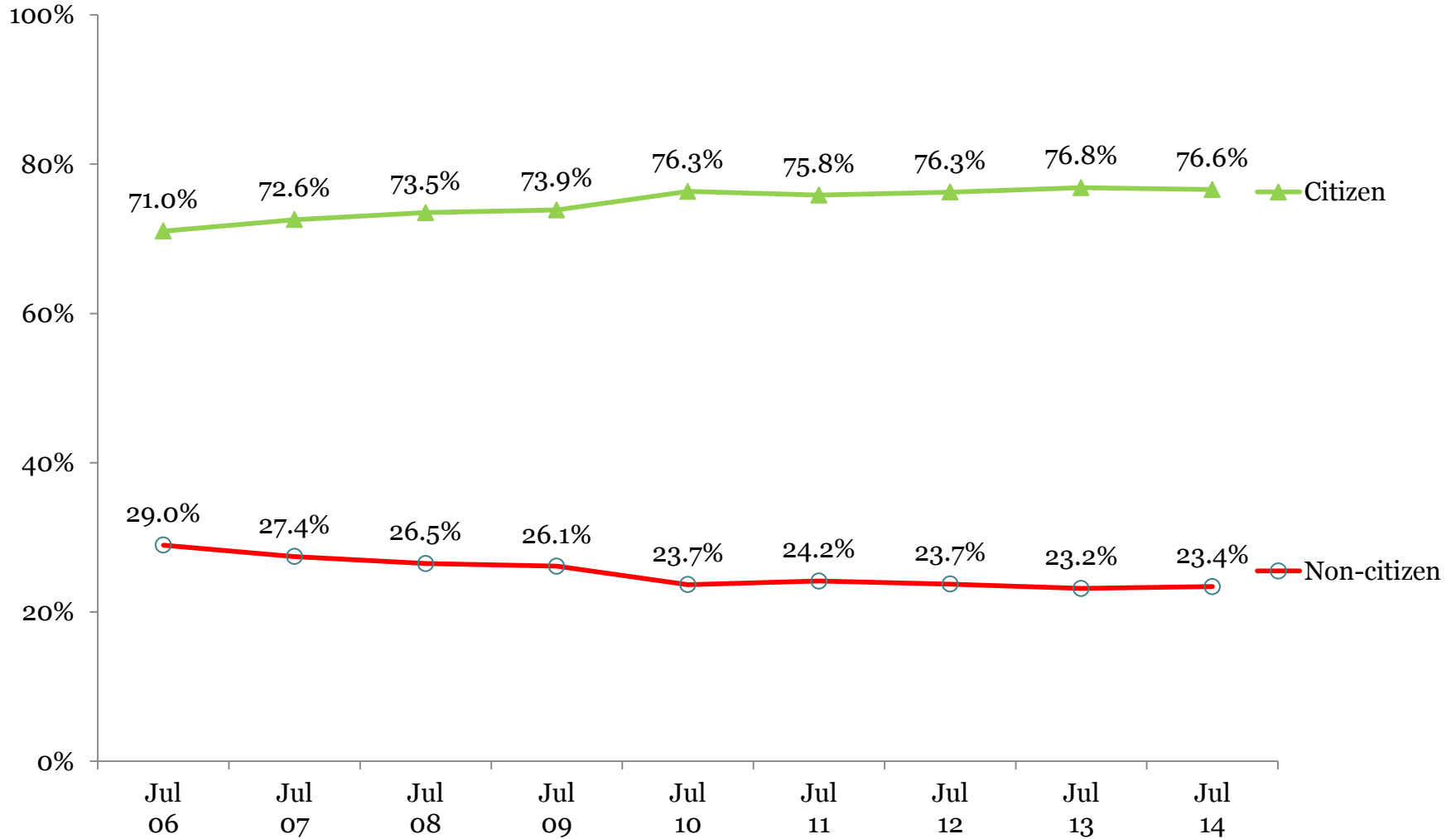


Figure 4: CalWORKs Participation Rates

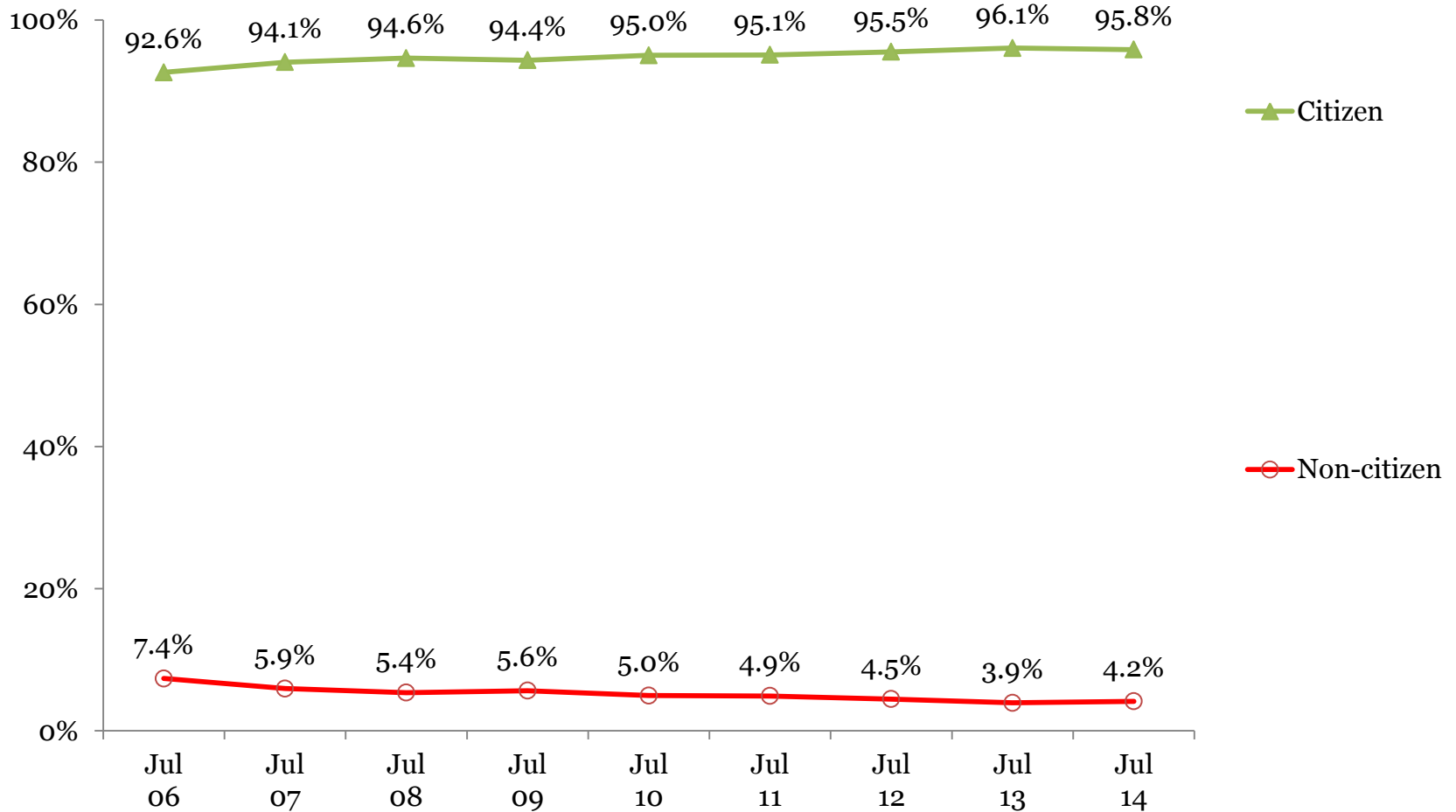
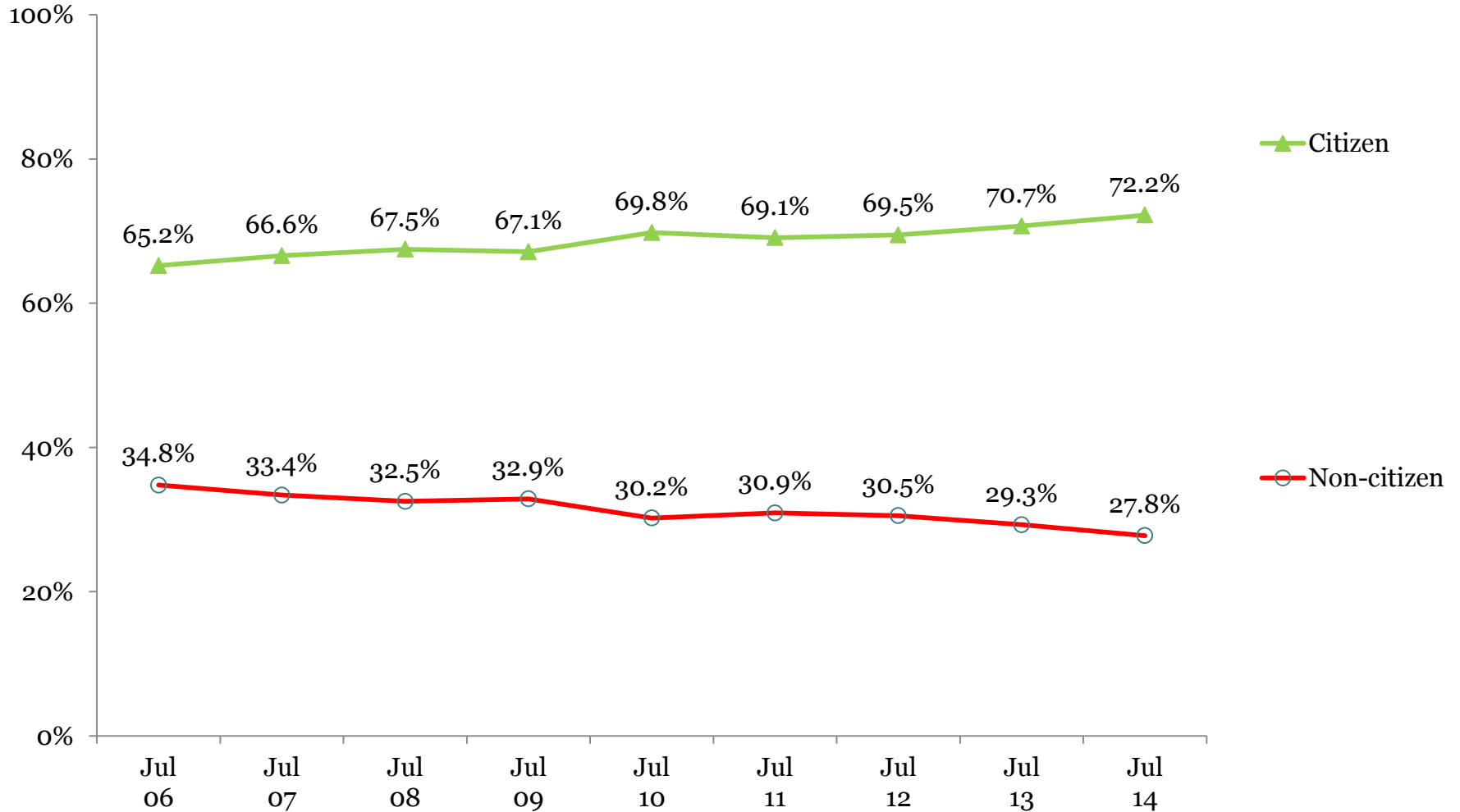


Figure 5: Medi-Cal Participation Rates



INNOVATIVE PROGRAMS IN SANTA CLARA COUNTY: Naturalization Programs and Benefits

Immigrant Relations and Integration Services (Program of County)

- Established as Citizenship Initiative in 1996 in direct response to Welfare Reform
- Offers free citizenship days, educational forums, resource guides, database of ESL & citizenship classes to promote full inclusion of immigrant communities

South Bay Legal Immigration Services Network

- Collaborative of CBO's providing citizenship, DACA, other legal services
- Funded by County Measure A, Silicon Valley Community Foundation

Conclusion

- Address service access barriers at multiple levels (individual, institutional, system, societal)
- Build capacity for cross-sector collaboration and partnership
- Promote integration and citizenship initiatives

References

- Card, D. & Raphael, S. (eds.). *Immigration, Poverty, and Socioeconomic Inequality*. NY: Russell Sage Foundation, 2013.
- Gabmetta, R. & Gedrimaite, Z. *Municipal Innovations in Immigrant Integration: 20 Cities, 20 Good Practices*. National League of Cities and Municipal Action for Immigrant Integration. (2010)
- *ImmigrantInfo.org*. (2014) Retrieved from <http://www.immigrantinfo.org>
- *Immigrant Relations and Integration Services*. (2012). Retrieved from [http://www.sccgov.org/sites/ohr/Immigrant%20Relations%20and%20Integration%20Services/Pages/Immigrant-Relations-and-Integration-Services-\(IRIS\).aspx](http://www.sccgov.org/sites/ohr/Immigrant%20Relations%20and%20Integration%20Services/Pages/Immigrant-Relations-and-Integration-Services-(IRIS).aspx)
- Singer, Audrey. (2002). *Immigrants, Welfare Reform and the Coming Reauthorization Vote*. Migration Information Source. Retrieved from <http://www.migrationpolicy.org/article/immigrants-welfare-reform-and-coming-reauthorization-vote>
- Pastor, M., Ortiz, R., Carter, V., Scoggins, J. & Perez, A. (2012) California Immigrant Integration Scorecard. University of Southern California, Center for the Study of Immigrant Integration
- Pastor, M. & Scoggins, J (2012). Citizen Gain: The Economic Benefits of Naturalization for Immigrants and the Economy. *The Center for the Study of Immigrant Integration (CSII)*. University of Southern California.
- Raphael, S. & Smolensky, E. Immigration and poverty in the United States. *The American Economic Review* . Vol. 99, No. 2, Papers and Proceedings of the 121st Meeting of the American Economic Association (May, 2009) , pp. 41-44 Published by: American Economic Association
- Santa Clara County Social Services Agency (2006-2014). *Quarterly Statistic Data of Public Assistance Families in the County of Santa Clara*. San Jose, CA: Department of Employment and Benefit Services Decision Support and Research Section.