



# Healthy Outlook

Division of Health, Health Policy and Health Services of  
the Society for the Study of Social Problems

Summer 2010

## Statement from the Co-Chair *Debi Street*

Dear Colleagues and Friends of the Division:

We look forward to seeing old friends and colleagues and meeting new ones at this year's SSSP Annual meeting in Atlanta. President JoAnn Miller's SSSP meeting theme "Social Justice Work" is a timely organizing principle for the work of many members of our division. The Health, Health Policy and Health Services Division's sessions and roundtables provide a foundation for discussions that hold promise for moving beyond research to action, establishing the kinds of foundational knowledge and policy agendas that may enhance social justice in the realm of health. Many of our co-sponsored sessions and roundtables address the meeting's theme, as do our two exciting thematic sessions: *Immigrant Health and Social Justice* organized by Edna A. Viruell-Fuentes and Jin Young Choi (Friday morning) and *Social (In)Justice and The Politics of Health Care Reform* organized by Arthur L. Greil and Debra Street (Friday afternoon).

In fact, please support all the fine scholars in our Division by attending as many Division sessions and roundtables as you can manage. And Friday evening, please join us for the Division co-sponsored **Reception**, 6:30-7:30 p.m., in the Athens Room, Sheraton Atlanta Hotel. Edna and I would also like to invite Division members to attend the **Division Business Meeting** on Saturday, August 13, from 12:30-2:10 pm in room Georgia 13 at the Atlanta Sheraton Hotel so that we can take advantage of your energy and creativity and widen participation in Division planning and activities.

In the busy run-up to the annual meeting the Division has had wonderful support--including two outstanding candidates for incoming Division co-chair (and an energized Division electorate in a close election), a busy Student Award Committee (chaired by Elizabeth Ettorre) selecting a winner among the great papers submitted by some very talented graduate students, superb work by Miranda Waggoner to get Division newsletters published and distributed to our members (don't forget to send her your good news and announcements), and the predictably excellent support from the SSSP administrative and executive staff. On behalf of Edna and myself, thanks to everyone for those important contributions to the mission, activities, and governance of our Division. I look forward to pursuing Division tasks in 2010-11 with incoming co-chair Elizabeth Gage, although I will surely miss our talented outgoing co-chair, Edna A. Viruell-Fuentes. Everyone in the Division should know that the main reason our Division ran so smoothly was Edna's depth of knowledge about Division tasks and her patience with a rookie co-chair! It has been a pleasure to work with Edna and Miranda to keep the Division moving forward and on top of communications with our members...many, many thanks for their wonderful contributions.

We look forward to seeing you in Atlanta...

Debi

### Inside this issue:

Statement from the Co-Chair	1
Paper Competition Awards	2
Call for Award Committee Chair	3
Division Election Results	3
News of Note	3
Call for Papers & New Program	4
Conference Hotel Info	5
Annual Meeting Events	6-7
Annual Meeting Sessions	8-13

# GRADUATE STUDENT PAPER AWARDS

## GRADUATE STUDENT PAPER WINNER

Congratulations to **Elizabeth M. Sweeney**, University of Cincinnati, whose paper, “Defining reality: How Biomedical Researchers Determine the Existence of Pain,” was chosen for 1<sup>st</sup> place in the SSSP Health, Health Policy and Health Services Division’s Graduate Student Paper Competition.

### **“Defining reality: How Biomedical Researchers Determine the Existence of Pain”**

#### **Abstract**

Chronic pain challenges the traditional construction of pain and illness, which dictates that an illness or pain is “normal” if its duration is brief and its effect is acute. The diagnosis of illness, conducted under the auspices of the scientific authority of biomedicine, consists of the examination and evaluation of the physical body. As such, this process ultimately adjudicates the validity of an illness and, as such, the validity of its sufferer. Biomedicine relies on a Foucaultian model for the construction of illness, a disembodied framework that is applied to the examination of illness. As indicated by the literature, it is this paradigm of disease that is responsible for the delegitimation of any illness for which there are no empirical pathologies or signs, otherwise constructed as “contested” illnesses. Previous sociological research has examined the social construction of pain from the microlevel perspective of the patient as well as that of the physician. Alternatively, inquiry into the biomedical framework – that of empirically-based medical research, as constituted in peer-reviewed scientific journals – has been minimal. This study examines those publications, utilizing the methodology of textual analysis to determine how the condition of chronic pain is constructed within and by the field of biomedicine.

---

## GRADUATE STUDENT PAPER HONORABLE MENTION

Congratulations also goes to **Barbara Gurr**, University of Connecticut, whose paper, “From Margin to Center: Native American Women, Reproductive Healthcare, and Reproductive Justice,” received Honorable Mention in the Health, Health Policy and Health Services Division’s Paper Competition.

### **“From Margin to Center: Native American Women, Reproductive Healthcare, and Reproductive Justice”**

#### **Abstract**

Inspired by the work of Native health activists such as Katsi Cook, Charon Asetoyer, Tasina Ska Win, and Cecilia Fire Thunder, this paper critically examines the reproductive healthcare experiences of Native American women within the institutional structure of the Indian Health Service, and locates these experiences within the broader social and political structures which organize these experiences for women living on the Pine Ridge Indian Reservation in South Dakota. Interviews with Lakota and other Native women on and around Pine Ridge Reservation are contextualized within the structural limitations of Indian Health Services to reveal the intersections of race, gender and class ideologies with notions of citizenship. By examining these intersections, this research decenters a normative, mainstream mytho-narrative of reproductive healthcare as it is based in liberal discourses of reproductive rights and forcefully expands the prevailing frames of this mytho-narrative to incorporate notions of reproductive justice.

## Call for Award Committee Chair

Many, many thanks go to Betsy Ettorre for serving as the Award Committee Chair for the past several years. Betsy has worked tirelessly for our section in a number of ways, and we cannot express enough appreciation for her. An Award Committee Chair is now needed to fill Betsy's position.

A new Award Committee Chair is sought to oversee the annual graduate student paper award competition for this division. Please contact co-chair Debi Street ([dastreet@buffalo.edu](mailto:dastreet@buffalo.edu)) if you are interested in this position or in becoming a member of the committee.

## New Division Co-Chair

Edna Viruell-Fuentes's tenure ends at this summer's meetings. Edna has been a wonderful co-chair, and we will be sad to see her go. But, we look forward to her continued support of this division. Thanks, Edna!!

Congratulations to **Elizabeth Gage**, our incoming co-chair! Elizabeth will serve alongside Debi Street as chairs of our division in the coming year.

## News?

Please send along!

Please send News to:  
Miranda Waggoner  
[waggoner@brandeis.edu](mailto:waggoner@brandeis.edu)

Edna A. Viruell-Fuentes  
**Division Co-Chair**  
University of Illinois at  
Urbana-Champaign  
Latina and Latino Studies  
Program  
[eviruell@uiuc.edu](mailto:eviruell@uiuc.edu)

Debra Street  
**Division Co-Chair**  
The State University of New  
York at Buffalo  
[dastreet@buffalo.edu](mailto:dastreet@buffalo.edu)

## News of Note!

- ✓ **Stephen Morewitz's** book, *Death Threats and Violence. New Research and Clinical Perspectives* (New York: Springer Science+Business Media, LLC), has been nominated for the SSSP Law & Society Division, Edwin H. Sutherland Book Award. Stephen's *Death Threats and Violence* will also be discussed in an Author Meets Critics session of the American Society of Criminology Annual Meeting in San Francisco, CA, November 17-20, 2010.
- ✓ **Lauren Rauscher** was awarded the Annual Advancement of Women Award at California State University Long Beach.
- ✓ **Miranda Waggoner** was awarded a 2010-2011 Mellon Dissertation Year Fellowship at Brandeis University.
- ✓ Here is a recent policy brief that members might find interesting: **Steven P. Wallace, D. Imelda Padilla-Frausto, Carolyn A. Mendez-Luck, Eva Durazo, A. E. Benjamin, Nadereh Pourat.** *Budget Proposals Turn Back Clock 30 Years in Long-Term Care Services for California Seniors.* Los Angeles, CA: UCLA Center for Health Policy Research. February 2010. It can be found at: <http://healthpolicy.ucla.edu/pubs/Publication.aspx?pubID=399>

**CONGRATULATIONS!**

## THE RUTGERS JOURNAL OF SOCIOLOGY: Emerging Areas in Sociological Inquiry CALL FOR PAPERS, 2010

*The Rutgers Journal of Sociology: Emerging Areas in Sociological Inquiry* provides a forum for graduate students and junior scholars to present well-researched and theoretically compelling review articles on an annual topic in sociology. Each volume features comprehensive commentary on emerging areas of sociological interest. These are critical evaluations of current research synthesized into cohesive articles about the state of the art in the discipline. Works that highlight the cutting-edge of the field, in terms of theoretical, methodological, or topical areas, are privileged.

RJS invites submissions for its first annual edition, which will focus on issues of MIND, BODY AND SOCIETY. *Papers and abstracts must be submitted by September 30<sup>th</sup>, 2010.*

Some overarching questions you might consider are:

- How might sociological approaches to and/or theories of mind and body elucidate unanswered or developing questions in the field?
- How do mind, body and society intersect to contribute to educational and occupational outcomes, sexual activity, deviance, reproduction, cognitive functioning, physical and mental health, political processes and social policy?
- What are some cross-cultural and trans-historical differences in the intersection of mind, body and society? How are these variations embedded in local and global contexts?

Areas we are especially interested in include the relation of Mind, Body and Society to:

\*Cognition\* Genetics and the human genome\* Disease diffusion \*Envisioning the body – especially in terms of race, class, gender and sexuality \*Effects of/on the environment \*Medical technology \*Mental health and illness \*Studies of the mind \*Cultural variation and perception \*Sexualities \*Lifestyle and sub-cultural practices \*Social movements \*Political processes and structures \*Inequality, power and resistance \*Social networks \*Transnational mobility and diffusion \*Social connections \*Technology

**Guidelines:** We accept original reviews of relevant research. Reviews must not be under review or elsewhere published at the time of submission and should be no more than 10,000 words, including references, notes, tables, figures, acknowledgements and all cover pages. The first page should contain a title, author's affiliation, a running head and approximate word count. The second page should contain the title, an abstract of no more than 250 words and should not contain the names of the authors. Papers should be double-spaced, using Times New Roman font size 12, with 1.25" margins on all sides. All references should be in Chicago Style (see ASA guidelines). All documents should be submitted as email attachments to [RJS@sociology.rutgers.edu](mailto:RJS@sociology.rutgers.edu) and must be MICROSOFT WORD DOCUMENTS. For further submission guidelines, see our guide for contributors at <http://sociology.rutgers.edu/RJS>.

### [New Doctoral Program in Health, Aging and Environment](#)

The University of Missouri sociology department has launched a new doctoral program area called "Health, Aging and Environment." It will focus on the interrelationships between health, sickness, aging, and the life course as these play out in varied environmental contexts. Concerned by the universalizing tendencies of both popular and research claims about the "correlates" of health, sickness, and aging, the program aims to highlight diversities and contradictions, and related possibilities.

Summer 2010

**The SSSP Conference Hotel**  
**The Sheraton Atlanta**



**GROUP: THE SOCIETY FOR THE STUDY OF SOCIAL PROBLEMS**

**DATE: August 10 – August 17, 2010**

**RATES: \$149 per night (standard single/double/triple/quadruple)**

**Rate is exclusive of 15% tax and subject to change without notice**

**CUT-OFF DATE: July 21, 2010**

---

**Hotel:**

The **Sheraton Atlanta Hotel** has invested \$90 million in renovations in the past eight years, adding style, a little sass, and some edge– guaranteeing you a vibrant experience beyond any other area luxury lodging. Within an 8 block radius of this downtown hotel, you'll find CNN Center, The Georgia Dome, Philips Arena, Centennial Olympic Park, and Peachtree Center to name just a few of the highlights.

All Sheraton Atlanta Hotel guest rooms and suites are 100 percent smoke free and include standard amenities, such as the luxurious Sheraton Sweet Sleeper<sup>SM</sup> bed – a custom designed plush top mattress set, a cozy fleece blanket, a plump duvet and five cushy pillows, Sheraton Bliss bath amenities, in-room video, bill review and checkout, 24-hour in-room dining service, complimentary weekday newspapers and the convenience of high-speed wireless Internet access (\$9.95/day).

The Sheraton Atlanta's guests are also invited to take advantage of the indoor/outdoor breathtaking poolside Garden Courtyard with fully retractable roof, two onsite dining venues, a full-service UPS store, a gift shop, a 24-hour Deli, valet and concierge services, computer and internet access in the Link, Cooper-Atlanta Transportation services, and a newly renovated 24-hour Sheraton Fitness center featuring upgraded LifeFitness equipment.

**Reservations:**

**Reservations.** To book, modify or cancel a reservation go to: [www.starwoodmeeting.com/Book/sssp2010](http://www.starwoodmeeting.com/Book/sssp2010). You can also call the hotel directly during the hours of 9:00am – 5:30pm (EST) at 404-659-6500 or Central Reservations department at 800-833-8624 (24hrs). When you call to make your reservation please give the name of the group to ensure you are given the correct room rate. It is very important to make your reservation early. Reservations made after July 21st or after the room block is filled are subject to non-availability and rate increase. Our special rate is \$149 per night (standard single/double/triple/quadruple). Rate is exclusive of 15% tax and subject to change without notice. Each reservation must be guaranteed with a credit card and will be charged one night room and tax when you book your reservation. Check in is at 3:00pm and check-out is at noon. There must be a 72 hour notice for cancellation prior to arrival. Any cancellation made after this will forfeit one night room and tax.

**165 Courtland Street NE.**

**Atlanta, GA 30303, United States**

**Phone: (404) 659-6500**

**<http://www.starwoodmeeting.com/Book/sssp2010>**

**Summer 2010**

# THE ANNUAL MEETING

August 13-15, 2010

Atlanta

## EVENTS!

### **SSSP Welcoming Reception:**

Thursday, August 12, 6-7pm  
Location: Garden Courtyard

### **Division-Sponsored Reception:**

Friday, August 13, 6:30-7:30pm  
Room: Athens

### **Division Business Meeting:**

Saturday, August 14, 12:30-2:10pm  
Room: Georgia 13

### **SSSP Awards Banquet:**

Saturday, August 14, 8-10pm  
Location: Capitol North Ballroom

### **Graduate Student Happy Hour:**

Friday, August 13, 10-11pm  
Location: Fandangles Restaurant & Martini Bar

### **Presidential Address by JoAnn Miller:**

Saturday, August 14, 11:10-12:20pm  
Room: Capitol South

This year's recipient of the **SSSP Social Action Award** is Project South's Youth Speak Truth

#### *SPECIAL*

*Session 70:* Social Action Award Winner

Room: Georgia 2

*Sponsor:* Program Committee

*Organizer & Presider:* Wendy Simonds, Georgia State University

*Description:* Representatives from the Atlanta winner of the 2010 SSSP Thomas C. Hood Social Action Award will discuss their organization's history, mission, and the unique and crucial work it does. Youth Speak Truth (YST), a program run by Project South: Institute for the Elimination of Poverty and Genocide, a grassroots community organization, enables young people to create and produce a 30-minute weekly public affairs program (called 'Youth Speak Truth') on local station WRFG 89.3. Project South's programs for youth "provide entry points for youth to engage in community governance opportunities, build leadership through historical analysis and critical development, and breaks isolation through connection to crossregional youth organizing efforts" ([http://www.projectsouth.org/index.php?option=com\\_content&view=article&id=33&Itemid=16](http://www.projectsouth.org/index.php?option=com_content&view=article&id=33&Itemid=16)).

**EVENTS (Continued)**

**WORKING TOGETHER TO END RACISM  
AND INTERNALIZED RACISM**

**SATURDAY, AUGUST 14, 2010**

**12:30 AM – 2:10 PM**

**Rooms Georgia 11 and 12**

**The Sheraton Atlanta Hotel, Atlanta, GA**

One of the key difficulties we face in taking effective action to end racism in the institutions we work for, in our families and in our lives in general is due to the ways that racism has affected us personally. This workshop will provide us with an opportunity to be listened to as we talk about the ways we've experienced racism and internalized racism and how that has affected us.

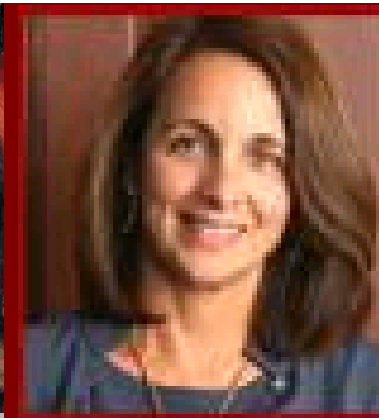
**Leaders**



**Jacqueline Kane**  
Office of Higher  
Education,  
University of NYS  
Education  
Department



**Adriana Leela  
Bohm**  
Sociology  
Delaware County  
Community College



**Claire Renzetti**  
Center for Research on  
Violence  
Against Women and  
Department of  
Sociology, University  
of Kentucky



**Pamela Roby**  
Sociology  
University of  
California, Santa  
Cruz

For more information contact: Pam: [robby@ucsc.edu](mailto:robby@ucsc.edu) or 831-427-2218; see "The Personal Remains Political," Claire Renzetti, *Social Problems Forum*, Fall 2007, pp. 4-5.

## DIVISION SESSIONS

For the full preliminary program, see the SSSP page:

<http://www.sssp1.org/index.cfm/m/376>

### **FRIDAY, AUGUST 13, 8:30-10:10am**

#### ***THEMATIC***

#### **Session 6: Immigrant Health and Social Justice**

Room: Georgia 11

*Sponsor:* Health, Health Policy, and Health Services

*Organizers:* Edna Viruell-Fuentes, University of Illinois at Urbana-Champaign

Jin Young Choi, Sam Houston State University

*Presider & Discussant:* Jin Young Choi, Sam Houston State University

#### *Papers:*

“Ethnic Enclaves or Residential Segregation: What is the Impact on Immigrant Health?” Sharese N. Porter, Rutgers University-University of Medicine and Dentistry of NJ- New Jersey Institute of Technology, Urban Systems Program

“How Professional Socialization and Practice Characteristics Shape Culturally Competent Care,” Mary A. Matteliano, University at Buffalo

“The Effects of Marital Assimilation on BMI among New Immigrants,” Jin Young Choi and Eunjin Hwang, Sam Houston State University

“The Need for Social Support Services and Health Interventions for Latino Immigrant Males,” Airin Denise Martinez, University of California, San Francisco

### **FRIDAY, AUGUST 13, 10:30am-12:10pm**

#### **Session 14: Health and Disabilities**

Room: Georgia 11

*Sponsors:* Disabilities

Health, Health Policy, and Health Services

*Organizer:* Alexis A. Bender, Georgia State University

*Presider & Discussant:* Alexis A. Bender, Georgia State University

#### *Papers:*

“A Balance of Health and Disability: The Pregnant Body,” Giovanna Follo, Emporia State University

“Exploring Differences in How Families of High and Low Socioeconomic Status Navigate the Same Health Care Settings,” Elizabeth Gage, Roswell Park Cancer Institute

“Playing God: The Legality of Plans Restricting People with Disabilities from Scarce Resources in Public Health Emergencies,” Wendy F. Hensel and Leslie E. Wolf, Associate Professor, GSU College of Law

“Representations of Disabilities as Health Status in Introductory Level Sociology Textbooks,” Christina Barmon and Alexis A. Bender, Georgia State University



**FRIDAY, AUGUST 13, 12:30-2:10pm**

**Session 26: Social Justice, the Environment, and Health**

Room: Georgia 12

*Sponsors:* Environment and Technology  
Health, Health Policy, and Health Services

*Organizer & Presider:* Erin E. Robinson, Canisius College

*Papers:*

“‘I Never Did Not Ride my Bike to where I was Going’: An Exploration of Pathways to Becoming and Staying Committed to Being a Utility Cyclist,” Deborah M. McCarthy, College of Charleston

“Close to Home: The Drive for Local Food,” Shawn Trivette, UMass-Amherst

“Social Justice and the Environment: Solid Waste Facilities in South Carolina,” Deborah Perkins and Rebecca Varner, Coastal Carolina University

“The Displacement of Health, Safety, and Environmental Risks in the World-System,” R. Scott Frey, Department of Sociology, University of Tennessee, Knoxville

**FRIDAY, AUGUST 13, 2:30-4:10pm**

**THEMATIC**

**Session 34: Social (In)Justice and The Politics of Health Care Reform**

Room: Georgia 12

*Sponsor:* Health, Health Policy, and Health Services

*Organizers:* Arthur L. Greil, Alfred University  
Debra Street, University at Buffalo

*Presider:* Debra Street, University at Buffalo

*Papers:*

“Beyond Access: Issues in Social Justice in Health Care,” Barbara Katz Rothman, City University of New York

“Citizenship, Exclusion and Health,” Sophia E. Hammett, University of New Mexico

“Infant Mortality and Human Rights: An Examination of Policy, Problems, and Solutions,” Jana N. Knibb, Florida Atlantic University

“Standing Against Cancer: A Model of Medical Care Delivery for Low-Income Populations,” Matthew Kearney, University of Wisconsin-Madison

“The Likelihood that Health Care Reform Will Produce Better Health,” Grace Budrys, dePaul University

**SATURDAY, AUGUST 14, 8:00-9:40am**

**Session 43: Health, Mental Health and Crime**

Room: Georgia 4

*Sponsors:* Crime and Juvenile Delinquency  
Health, Health Policy, and Health Services  
Mental Health

*Organizer & Presider:* Mark Peyrot, Loyola University Maryland

*Papers:*

“The Associations Among Sexual Orientation, Mistreatment by Parents and Caregivers during Childhood, and Adult Depression,” Elbert P. Almazan, Central Michigan University

“Youth Aspirations and the Stress Process,” Karen Van Gundy, Nena F. Stracuzzi and Cesar J. Rebellon, University of New Hampshire

“Examining the Impact of Victimization on Distress, Substance Abuse, and Self-Concept among People with Serious Mental Illness,” Mary Gallagher, Kent State University, Christian Ritter, Northeastern Ohio Universities Colleges of Medicine and Pharmacy and Kristen Marcussen, Kent State University

“The Effect of Child Welfare Intervention on the Relationship between Child Abuse Victimization and Adult Mental Illness,” Rachel Butts, Michigan State University

“Mental Health Courts as Reintegrative Shaming,” Bradley Ray, Cindy B. Dollar and Kelly Thames, North Carolina State University

**SATURDAY, AUGUST 14, 2:30-4:10pm**

**Session 68: Health Policy and Inequality (Papers in the Round)**

Room: Georgia 13

*Sponsors:* Health, Health Policy, and Health Services  
Poverty, Class, and Inequality

*Organizer:* Sue Ellen Bell, Minnesota State University, Mankato

*Presider & Discussant:* Sue Ellen Bell, Minnesota State University, Mankato

**Roundtable Title: Health Policy and Inequality**

*Papers:*

“Explaining Racial Disparities in Breast Cancer Screening,” Shannon M. Monnat, University of Nevada Las Vegas

“Out of Sight, Out of Mind?: A Comparison of Birth Outcomes Between Black Women in the US Mainland and US Territories,” Karyn A. Stewart, Syracuse University, Maxwell School, Sociology Department

“Sanitizing Rhetorics of the Blood Plasma Industry,” Leon Anderson, Ohio University

“The Contexts Shaping Childhood Exposure to Violence in Schools and Neighborhoods,” Anna Maria Santiago, Case Western Reserve University, Mandel School of Applied Social Sciences, Jessica L. Lucero, Wayne State University, School of Social Work, George C. Galster, Wayne State University, Dept. of Urban Studies and Planning and Jackie M. Cutsinger, Wayne State University, Department of Sociology

**SUNDAY, AUGUST 15, 8:30-10:10am**

**Session 89: Health, Health Policy, and Health Services Roundtables**

Room: Georgia 13

*Sponsor:* Health, Health Policy, and Health Services

*Organizer & Presider:* Edna Viruell-Fuentes, University of Illinois at Urbana-Champaign

**Roundtable Title: Emerging Issues in Health and Health Policy**

*Papers:*

“Health Insurance Access among Grandparents Providing Care for Grandchildren,” Jennifer R. Bulanda, Miami University

“The Evolution of Industrial Food Production: McDonaldisation and Population Health,” Andrew D. Currey and Brian Philip Hinote, Middle Tennessee State University

“The Global Diffusion of Cause-Related Marketing via Biomedical Breast Cancer Advocacy Organizations,” Lori B. Baralt, California State University, Long Beach

“Weighing In: A Critical Analysis of New York City’s Calorie Labeling Law,” Josephine Barnett, CUNY Hunter College NYC

**Roundtable Title: Emerging Issues in Mental Health and Violence**

*Papers:*

“Lesbian, Gay, Bisexual and Transgender (LGBT) Adolescent Dating Violence: A Discussion of Research and Resources,” Leandra Smollin, Northeastern University

“Student Perceptions of Mental Illness on Campus: Stigma and Academic Performance,” Kathleen M. Brennan, Western Carolina University

“The Social Construction and Experience of PTSD Among Vietnam Veterans With Combat Related Limb-Loss,” Carrie Foote, IUPUI and Seth Messinger, University Maryland Baltimore County

**SUNDAY, AUGUST 15, 10:30am-12:10pm**

**Session 92: Non-Medical Prescription Drug Use: Current Problems**

Room: Georgia 3

*Sponsors:*

Drinking and Drugs  
Health, Health Policy, and Health Services  
Program Committee

*Organizer:*

Stephen E. Lankenau, Drexel University

*Discussant:*

Stephen J. Sifaneck, Berkeley College

*Papers:*

“Patterns of Opioids Misuse among High-Risk Youth,” Stephen E. Lankenau and Michelle Teti, Drexel University, Jennifer Bloom, Childrens Hospital Los Angeles, Alex Harocopos, National Development and Research Institutes, Inc., Meghan Treese, Childrens Hospital Los Angeles and Karol Silva, Drexel University

“Prevalence and Predictors of Non-Medical Prescription Drug Use among Men who have Sex with Men,” Brian C. Kelly, Purdue University and Jeffrey T. Parsons, Hunter College - City University of New York

“From Oxycontin to Street Methadone and Heroin: Nonmedical Prescription Drug Use among Young Adults in San Francisco,” Sheigla B. Murphy and Paloma Sales, Institute for Scientific Analysis

“The Relationship between Source of Diversion and Prescription Drug Misuse, Abuse, and Dependence,” Jason Ford and Christina Lacerenza, University of Central Florida

**SUNDAY, AUGUST 15, 12:30-2:10pm**

**Session 103: Reproductive Justice I Exploring Birth**

Room: Georgia 6

*Sponsors:* Family  
Health, Health Policy, and Health Services

*Organizers:* Elizabeth Ettorre, University of Liverpool  
Miranda R. Waggoner, Brandeis University

*Presider:* Miranda R. Waggoner, Brandeis University

*Papers:*

“Abortion: An Exploratory Study,” Julie Mikles-Schluterman and Britney Hunter, Arkansas Tech University

“It’s Always the Woman’s Fault: An Exploration of the Implications of Infertility in Ghana,” Jasmine J. Fledderjohann, Penn State University

“The Infertility Diagnosis and Negative Effects on Women,” Ophra Leyser-Whalen, Haskell Indian Nations University

“Unequal Enhancement or Justified Improvement--Comparison of American and Chinese College Students’ Attitudes toward Genetic Enhancement,” Rong Fu, Purdue University

“Wombs for Rent? The Contested Discourse of Contemporary Surrogacy,” Heather Jacobson, The University of Texas at Arlington

**SUNDAY, AUGUST 15, 2:30-4:10pm**

**Session 110: Reproductive Justice II Exploring Motherhood**

Room: Georgia 6

*Sponsors:* Family  
Health, Health Policy, and Health Services

*Organizers:* Elizabeth Ettorre, University of Liverpool  
Miranda R. Waggoner, Brandeis University

*Presider:* Miranda R. Waggoner, Brandeis University

*Papers:*

“Counting Words: or How Legislation has Moved from the Woman in Roe to the Unborn Life in Casey and Beyond,” Marietta K. Riska, LL.M., MS International Law

“Explanatory Models of Sudden Infant Death (SIDS) and ‘Unfit’ Mothers,” Caitlin Orlandella Slodden, Brandeis University

“From Margin to Center: Native American Women, Healthcare, and Reproductive Justice,” Barbara Gurr, University of Connecticut, **Honorable Mention of the Health, Health Policy, and Health Services Division’s Student Paper Competition**

“Motherhood from the Margins,” Kristin J. Wilson, Georgia State University

“Unnecessary or Necessary? How African American and European American Women Discuss Hysterectomies during In-Depth Interviews,” Heather Dillaway and Jean Burton, Wayne State University

**SUNDAY, AUGUST 15, 4:30-6:10pm**

***Session 116: Health Care Reform and Societal Aging***

Room: Georgia 6

*Sponsors:* Health, Health Policy, and Health Services  
Youth, Aging, and the Life Course

*Organizers:* Debra Street, University at Buffalo  
Leah Rogne, Minnesota State University

*Presider & Discussant:* Debra Street, University at Buffalo

*Papers:*

“Career Expectancy of Mississippi Physicians: Identifying Future Physician Workforce Needs,” Jeralynn S. Cossman and Jamie Boydston, Mississippi State University

“Health Reform, Health Security and the Wellbeing of Midlife and Older Americans and Canadians,” Sarah Desai, University at Buffalo, SUNY and Debra Street, University at Buffalo

“The Inclusion of Long-Term Services and Supports in U.S. Healthcare Reform Debates,” Brian R. Grossman, San Jose State University

“Working After Retirement: Considering the Role of Health Insurance as a Cause and Consequence of Unretirement,” Ben Lennox Kail, Florida State University

**SEE YOU IN ATLANTA!!**